

# Toledo Auger Reducers

## M164-56N, Single and Double Hole Shaft



## M164-56N

### Basic Specifications

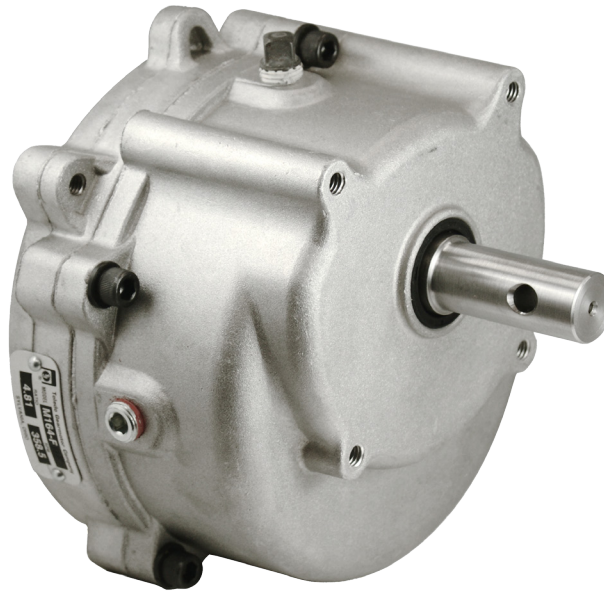
- Power Ratings up to 1.5HP
- Output Torque to 290 in-lbs
- 4.81:1 and 6.48:1 ratios available
- Other ratios available upon request

### Applications

- Animal livestock systems and auger feeders; driving (screw conveyors) in-floor feeding applications.

### Standard Features

- Parallel shaft two-stage gear reducer
  - Ball bearings on output shaft
  - Induction hardened teeth on all gears and pinions
  - Die cast aluminum housing, precision machined for accurate shaft alignment
  - Flanged and bored for face-mounting
- 56 Frame (rabbit ear) auger motor with 5/8" dia. shaft, 3/16" keyway



### Auger Gear Reducer

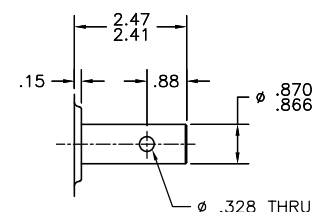
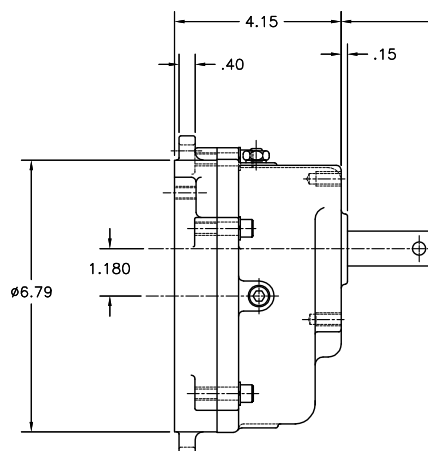
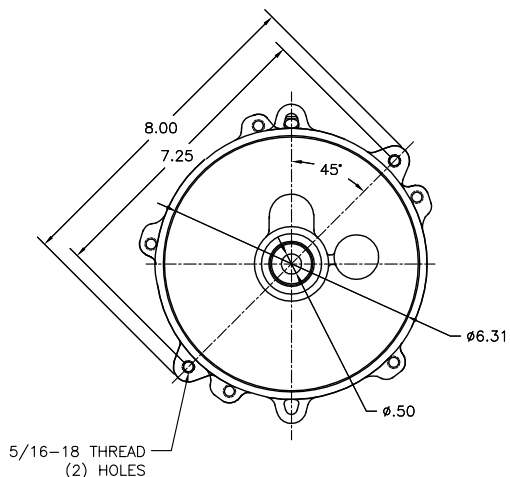
Type	Part Number	Ratio	RPM	List
M164	M164-FRME	4.81:1	358	\$319
M164	M164-LRME	6.48:1	266	\$319

### Accessories Auger Gear Reducer

Part Number	Description	List
1614-MX5	1/2" Pinion (1/3-3/4HP)	\$38
1614-MX	5/8" Pinion (1-1.5HP)	\$38
M162-7	Auger Adaptor Flange 56C	\$70
1614-6	Auger Adaptor Pinion 5/8" 56C	\$30



### M164 Dimensional Details



Dimensions are in inches



www.mldltd.com