

WWW.NTLL-BPT.COM

NATIONAL



OEM Products
BEARINGS

TABLE OF CONTENTS

BEARING UNITS	5	SBPF200 Series Round Flangettes Narrow Inner Race	38
Part Number Identification	6	SAPF200 Series Round Flangettes Narrow Inner Race	39
SER200 Series Wide Inner Race Bearings	7	SBPFL200 Series 2-Bolt Flangettes Narrow Inner Race	40
UC200 Series Wide Inner Race Bearings	8	SAPFL200 Series 2-Bolt Flangettes Narrow Inner Race	41
SB200 - CSB200 Series Narrow Inner Race Bearings	9	LRCR-12 & RCSM-16 Rubber Cartridges	42
HC200 Series Wide Inner Race Bearings	10		
SA200 - SAA200 Series Narrow Inner Race Bearings	11	BALL AND ROLLER BEARINGS	43
UCPE200 Series Pillow Blocks Wide Inner Race	12	R Series Ball Bearings	44
SBPE200 Series Pillow Blocks Narrow Inner Race	13	1600 Series Ball Bearings	45
HCPE200 Series Pillow Blocks Wide Inner Race	14	600 Series Ball Bearings	46
SAPE200 Series Pillow Blocks Narrow Inner Race	15	16000, 6800, 6900, 6000, 6200, 6300 Series Ball Bearings	47
UCTB200 Series Tapped Base Pillow Blocks Wide Inner Race	16	SS6000, SS6200 Series Stainless Steel	50
UCPA200 Series Tapped Base Pillow Blocks Wide Inner Race	17	CS200, CS300 Series Spherical O.D. Ball Bearings	51
UCF200 Series 4-Bolt Flange Wide Inner Race	18	3200 Series Double Row Angular Contact Ball Bearings	52
SBF200 Series 4-Bolt Flange Narrow Inner Race	19	3300 Series Double Row Angular Contact Ball Bearings	53
HCFS200 Series 4-Bolt Flange Wide Inner Race	20	SBB Series Imperial Spherical Plain Bearings	54
UCFC200 Series 4-Bolt Flange Cartridge Wide Inner Race	21	GE Series Metric Spherical Plain Bearings	55
UCFL200 Series 2-Bolt Flange Wide Inner Race	22	Imperial Series Tapered Roller Bearings	56
SBFL200 Series 2-Bolt Flange Narrow Inner Race	23	Metric Series Tapered Roller Bearings	58
HCFT200 Series 2-Bolt Flange Wide Inner Race	24		
SAFL200 Series 2-Bolt Flange Narrow Inner Race	25	AGRICULTURAL BEARINGS	59
SBFD200 Series 2-Bolt Flange Narrow Inner Race	26	Agricultural Bearings Tri-Ply Seal Square Flange Units	60
SAFD200 Series 2-Bolt Flange Narrow Inner Race	27	Round Bore Non-Relubricatable	61
SBLF200 Series 2-Bolt Flange Narrow Inner Race	28	Round Bore Relubricatable	62
SALF200 Series 2-Bolt Flange Narrow Inner Race	29	Square Bore Non-Relubricatable	63
SBFCT200 Series 3-Bolt Triangular Flange Narrow Inner Race	30	Square Bore Relubricatable	64
SAFCT200 Series 3-Bolt Triangular Flange Narrow Inner Race	31	Hex Bore Series Agricultural Bearings	65
UCFB200 Series 3-Bolt Flange Bracket Wide Inner Race	32	200 Series Agricultural Bearings	66
UCFK200 Series 3-Bolt Flange Bracket Wide Inner Race	33	Special Sizes Agricultural Bearings	67
UCST200 Series Take-Up Units - Wide Slot Wide Inner Race	34	National Agricultural Bearing Interchange	68
UCT200 Series Take-Up Units - Narrow Slot Wide Inner Race	35		
SBPP200 Series Pressed Steel Pillow Blocks Narrow Inner Race	36	National Products Limited Warranty	71
SAPP200 Series Pressed Steel Pillow Blocks Narrow Inner Race	37		

ASK FOR NATIONAL QUALITY

Note actual products may differ from photos shown in this brochure.
Product availability and specifications are subject to change without notice.

BEARING UNITS





Part Number Identification

BEARING UNITS

UC	PE	205	-16
BEARING	HOUSING	SERIES	SHAFT

BEARING TYPE

UC	SB	HC	SA	SER	CSB	SAA
Set Screw Type, Wide Inner Race	Set Screw Type, Narrow Inner Race	Locking Collar Type, Wide Inner Race	Locking Collar Type, Narrow Inner Race	Set Screw Type, Wide Inner Race, Cylindrical O.D. with Snap Ring	Set Screw Type, Narrow Inner Race, Cylindrical O.D.	Locking Collar Type, Narrow Inner Race, Cylindrical O.D.

HOUSING TYPE

F	FS	FC	FB	FK	FD	FL	FT	LF	FCT
4-Bolt Flange Normal Type	4-Bolt Flange for HC Type Insert	4-Bolt Cartridge Flange	3-Bolt Adapter Flange American Style	3-Bolt Adapter Flange European Style	Flat 2-Bolt Flange	2-Bolt Flange Normal Type	2-Bolt Flange for HC Type Insert	2-Bolt Flange Light Duty	Triangular Flange
HA	PE	P	PA	TB	ST	T	PF	PFL	PP
Hanger	Standard Height Pillow Block with Reinforced Solid Base	Standard Height Pillow Block 'REPLACED BY PE'	Tapped Base Pillow Block Metric Bolt	Tapped Base Pillow Block Imperial Bolt	Take-up Wide Slot	Take-up Narrow Slot	Round Pressed Steel Flange Not Relubricatable	2-Bolt Pressed Steel Flange Not Relubricatable	Pressed Steel Pillow Block Not Relubricatable

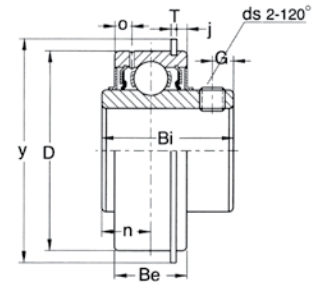
SERIES

200	X00	300
Normal Duty	Medium Duty	Heavy Duty

SHAFT

16
Fractional, 16 = 1 inch

SER200 SERIES
WIDE INNER RACE BEARINGS
 SET SCREW LOCKING
 CYLINDRICAL O.D. WITH SNAP RING
 RELUBRICATABLE



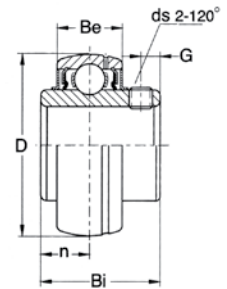
Bearing No.	Shaft Dia.		Dimensions (mm)										Basic Load Ratings (N)		Weight (kg)
	In.	mm	D	Bi	Be	n	o	T	j	G	ds	y	Dynamic C	Static Co	
SER201-08	1/2		47	31.0	15.9	11.5	4.0	1.35	2.46	5.0	1/4-28UNF M6 x 1.0	52.7	12 850	6 650	0.25
SER202-10	5/8														
SER204		20													
SER204-12	3/4		52	34.9	19.1	13.1	5.2	1.35	2.46	5.6	1/4-28UNF M6 x 1.0	57.9	14 030	7 880	0.31
SER205		25													
SER205-14	7/8														
SER205-15	15/16														
SER205-16	1														
SER206		30	62	38.1	22.2	15.9	5.6	1.90	3.28	5.6	1/4-28UNF M6 x 1.0	67.7	19 480	11 320	0.42
SER206-17	1-1/16														
SER206-18	1-1/8														
SER206-19	1-3/16														
SER206-20	1-1/4S														
SER207		35	72	42.9	23.8	17.5	5.6	1.90	3.28	6.4	5/16-24UNF M8 x 1.0	78.6	25 680	15 310	0.62
SER207-20	1-1/4														
SER207-21	1-5/16														
SER207-22	1-3/8														
SER207-23	1-7/16														
SER208		40	80	49.2	27.8	19.0	6.4	1.90	3.28	8.0	5/16-24UNF M8 x 1.0	86.6	29 540	18 150	0.91
SER208-24	1-1/2														
SER208-25	1-9/16														
SER209		45	85	49.2	27.8	19.0	6.4	1.90	3.28	8.0	3/8-24UNF M10 x 1.25	91.6	31 700	20 690	1.05
SER209-26	1-5/8														
SER209-27	1-11/16														
SER209-28	1-3/4														
SER210		50	90	51.6	28.6	19.0	7.5	2.70	3.28	9.5	3/8-24UNF M10 x 1.25	96.6	35 100	23 190	1.1
SER210-30	1-7/8														
SER210-31	1-15/16														
SER210-32	2S														
SER211		55	100	55.6	30.2	22.2	7.5	2.70	3.28	9.5	3/8-24UNF M10 x 1.25	106.6	43 400	29 240	1.36
SER211-32	2														
SER211-34	2-1/8														
SER211-35	2-3/16														
SER212		60	110	65.1	31.8	25.4	7.5	2.70	3.28	11.1	3/8-24UNF M10 x 1.25	116.6	47 790	32 950	2.53
SER212-36	2-1/4														
SER212-38	2-3/8														
SER212-39	2-7/16														
SER213		65	120	65.1	32	25.4	7.9	2.80	4.00	11.1	3/8-24UNF M10 x 1.25	134.7	57 250	40 030	2.9
SER213-40	2-1/2														
SER215		75	130	77.8	38.1	33.3	10.0	3.10	4.16	12	3/8-24UNF M10 x 1.25	139.7	66 220	49 530	3.6
SER215-47	2-15/16														
SER215-48	3														

ASK FOR NATIONAL QUALITY

Note actual products may differ from photos shown in this brochure.
 Product availability and specifications are subject to change without notice.



UC200 SERIES
WIDE INNER RACE BEARINGS
 SET SCREW LOCKING
 SPHERICAL O.D.
 RELUBRICATABLE



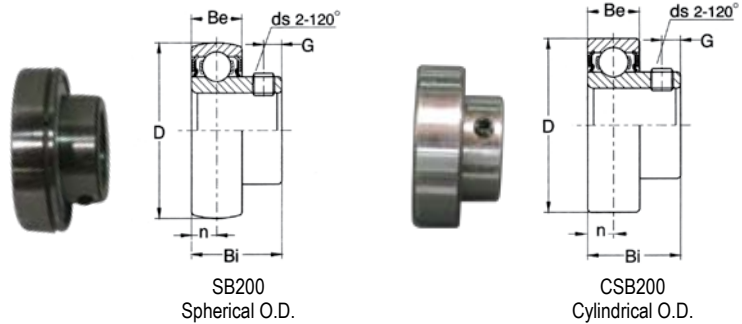
Bearing No.	Shaft Dia.		Dimensions (mm)						Basic Load Ratings (N)		Weight (kg)
	In.	mm	D	Bi	Be	n	G	ds	Dynamic C	Static Co	
UCW201-08	1/2		40	26	15	10	4	10-32UNF M5 x 0.8	9 560	4 750	0.15
UCW202-10	5/8										0.14
UC201		12	47	31	16	12.7	5	1/4-28UNF M6 x 1.0	12 850	6 650	0.21
UC201-08	1/2										0.21
UC202		15									0.2
UC202-10	5/8										0.19
UC203		17									0.18
UC204		20									0.17
UC204-12	3/4										0.18
UC205		25									0.2
UC205-14	7/8		52	34	17	14.3	5.5	1/4-28UNF M6 x 1.0	14 030	7 880	0.23
UC205-15	15/16										0.21
UC205-16	1										0.2
UC206		30	62	38.1	19	15.9	6	1/4-28UNF M6 x 1.0	19 480	11 320	0.33
UC206-17	1-1/16										0.37
UC206-18	1-1/8										0.35
UC206-19	1-3/16										0.33
UC206-20	1-1/4S										0.3
UC207		35									0.4
UC207-20	1-1/4										0.55
UC207-21	1-5/16		72	42.9	20	17.5	6.5	5-16/24UNF M8 x 1.0	25 680	15 310	0.52
UC207-22	1-3/8										0.49
UC207-23	1-7/16										0.46
UC208		40									0.65
UC208-24	1-1/2		80	49.2	21	19	8	5-16/24UNF M8 x 1.0	29 540	18 150	0.69
UC208-25	1-9/16										0.67
UC209		45									0.7
UC209-26	1-5/8		85	49.2	22	19	8	5-16/24UNF M8 x 1.0	31 700	20 690	0.8
UC209-27	1-11/16										0.76
UC209-28	1-3/4										0.71
UC210		50									0.8
UC210-30	1-7/8		90	51.6	24	19	9	3/8-24UNF M10 x 1.25	35 100	23 190	0.87
UC210-31	1-15/16										0.82
UC210-32	2S										0.77
UC211		55									1.08
UC211-32	2		100	55.6	25	22.2	9	3/8-24UNF M10 x 1.25	43 400	29 240	1.23
UC211-34	2-1/8										1.18
UC211-35	2-3/16										1.06
UC212		60	1.53								
UC212-36	2-1/4		110	65.1	27	25.4	10.5	3/8-24UNF M10 x 1.25	47 790	32 950	1.66
UC212-38	2-3/8										1.51
UC212-39	2-7/16										1.44
UC213		65	1.85								
UC213-40	2-1/2		120	65.1	28	25.4	12	3/8-24UNF M10 x 1.25	57 250	40 030	1.94
UC214		70									2.1
UC214-43	2-11/16		125	74.6	30	30.2	12	7/16-20UNF M12 x 1.25	62 220	44 000	2.2
UC214-44	2-3/4										2.11
UC215		75	2.35								
UC215-47	2-15/16		130	77.8	30	33.3	12	7/16-20UNF M12 x 1.25	66 220	49 530	2.39
UC215-48	3										2.26

BEARING UNITS

ASK FOR NATIONAL QUALITY

Note actual products may differ from photos shown in this brochure.
 Product availability and specifications are subject to change without notice.

SB200 - CSB200 SERIES NARROW INNER RACE BEARINGS SET SCREW LOCKING



Bearing No.		Shaft Dia.		Dimensions (mm)						Basic Load Ratings (N)		Weight (kg)
Spherical O.D.	Cylindrical O.D.	In.	mm	D	Bi	Be	n	G	ds	Dynamic C	Static Co	
SB201	CSB201		12	40	22	12	6.0	4	1/4-28UNF M6 x 1.0	9 600	4 400	0.1
SB201-08	CSB201-08	1/2	0.1									
SB202	CSB202		15									0.09
SB202-10	CSB202-10	5/8	0.09									
SB203	CSB203		17	47	25	14	7.0	5	1/4-28UNF M6 x 1.0	12 850	6 650	0.08
SB204	CSB204		20									0.13
SB204-12	CSB204-12	3/4	0.13									
SB205	CSB205		25									52
SB205-14	CSB205-14	7/8	0.18									
SB205-15	CSB205-15	15/16	0.18									
SB205-16	CSB205-16	1	0.16									
SB206	CSB206		30	62	30	16	8.0	6	5/16-24UNF M8 x 1.0	19 480	11 320	0.25
SB206-17	CSB206-17	1-1/16	0.27									
SB206-18	CSB206-18	1-1/8	0.26									
SB206-19	CSB206-19	1-3/16	0.25									
SB206-20	CSB206-20	1-1/4S	0.24									
SB207	CSB207		35	72	32	17	8.5	6	5/16-24UNF M8 x 1.0	25 680	15 310	0.38
SB207-20	CSB207-20	1-1/4	0.43									
SB207-21	CSB207-21	1-5/16	0.42									
SB207-22	CSB207-22	1-3/8	0.38									
SB207-23	CSB207-23	1-7/16	0.31									
SB208	CSB208		40	80	34	18	9.0	6	5/16-24UNF M8 x 1.0	29 540	18 150	0.5
SB208-24	CSB208-24	1-1/2	0.52									
SB208-25	CSB208-25	1-9/16	0.48									

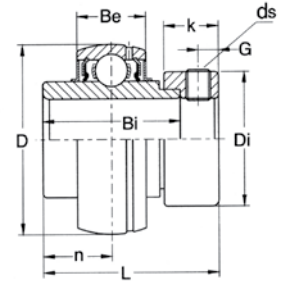
To order relubricatable type add suffix "G": SB205-16G.

ASK FOR NATIONAL QUALITY

Note actual products may differ from photos shown in this brochure.
Product availability and specifications are subject to change without notice.



HC200 SERIES
WIDE INNER RACE BEARINGS
 ECCENTRIC LOCKING COLLAR
 SPHERICAL O.D.
 RELUBRICATABLE



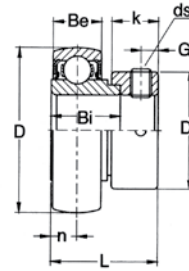
Bearing No.	Shaft Dia.		Dimensions (mm)									Basic Load Ratings (N)		Weight (kg)
	In.	mm	D	L	Bi	Be	n	Di	k	G	ds	Dynamic C	Static Co	
HC201-08	1/2		47	43.5	34	17	17	33.3	13.5	5	1/4-28UNF M6 x 1.0	12 850	6 650	0.23
HC202-10	5/8													0.28
HC204		20												0.24
HC204-12	3/4													0.21
HC205		25												0.27
HC205-14	7/8		52	44.3	34.8	17	17.4	38.1	13.5	5	1/4-28UNF M6 x 1.0	14 030	7 880	0.26
HC205-15	15/16													0.25
HC205-16	1													0.23
HC206		30												0.45
HC206-17	1-1/16													0.43
HC206-18	1-1/8		62	48.3	36.4	19	18.2	44.5	15.9	6	5/16-24UNF M8 x 1.0	19 480	11 320	0.38
HC206-19	1-3/16													0.36
HC206-20	1-1/4S													0.4
HC207		35												0.6
HC207-20	1-1/4													0.66
HC207-21	1-5/16		72	51.1	37.6	20	18.8	55.6	17.5	6.5	5/16-24UNF M8 x 1.0	25 680	15 310	0.64
HC207-22	1-3/8													0.61
HC207-23	1-7/16													0.58
HC208		40												0.79
HC208-24	1-1/2		80	56.3	42.8	21	21.4	60.3	18.3	6.5	5/16-24UNF M8 x 1.0	29 540	18 150	0.86
HC208-25	1-9/16													0.82
HC209		45												
HC209-26	1-5/8		85	56.3	42.8	22	21.4	63.5	18.3	6.5	5/16-24UNF M8 x 1.0	31 700	20 690	0.93
HC209-27	1-11/16													0.9
HC209-28	1-3/4													0.85
HC210		50												0.98
HC210-30	1-7/8		90	62.7	49.2	24	24.6	69.9	18.3	6.5	5/16-24UNF M8 x 1.0	35 100	23 190	1.07
HC210-31	1-15/16													1.03
HC210-32	2S													0.95
HC211		55												1.32
HC211-32	2		100	71.4	55.4	25	27.7	76.2	20	8	3/8-24UNF M10 x 1.25	43 400	29 240	1.49
HC211-34	2-1/8													1.37
HC211-35	2-3/16													1.32
HC212		60												1.87
HC212-36	2-1/4		110	77.7	61.8	27	30.9	84	22.3	8	3/8-24UNF M10 x 1.25	47 790	32 950	1.99
HC212-38	2-3/8													1.84
HC212-39	2-7/16													1.76
HC213		65												2.48
HC213-40	2-1/2		120	85.7	68.2	28	34.1	86	23.5	8.5	3/8-24UNF M10 x 1.25	57 250	40 030	2.49
HC214		70												2.47
HC214-43	2-11/16													2.7
HC214-44	2-3/4													2.35
HC215		75												2.68
HC215-47	2-15/16		130	92.1	74.6	30	37.3	102	23.5	8.5	3/8-24UNF M10 x 1.25	66 220	49 530	2.67
HC215-48	3													2.55

BEARING UNITS

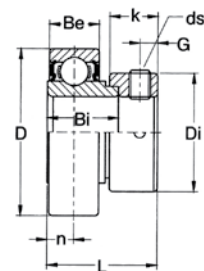
ASK FOR NATIONAL QUALITY

Note actual products may differ from photos shown in this brochure.
 Product availability and specifications are subject to change without notice.

SA200 - SAA200 SERIES NARROW INNER RACE BEARINGS ECCENTRIC LOCKING COLLAR



SA200
Spherical O.D.



SAA200
Cylindrical O.D.

Bearing No.		Shaft Dia.		Dimensions (mm)									Basic Load Ratings (N)		Weight (kg)
Spherical O.D.	Cylindrical O.D.	In.	mm	D	L	Bi	Be	n	Di	k	G	ds	Dynamic C	Static Co	
SA201	SAA201		12												0.12
SA201-08	SAA201-08	1/2													0.12
SA202	SAA202		15	40	28.6	19	12	6	29	13.5	4.8	1/4-28UNF M6 x 1.0	9 600	4 400	0.11
SA202-10	SAA202-10	5/8													0.11
SA203	SAA203		17												0.1
SA204	SAA204		20	47	31	21.5	14	7	33.0	13.5	4.8	1/4-28UNF M6 x 1.0	12 850	6 650	0.17
SA204-12	SAA204-12	3/4													0.16
SA205	SAA205		25												0.2
SA205-14	SAA205-14	7/8		52	31	21.5	15	7.5	38.0	13.5	4.8	1/4-28UNF M6 x 1.0	14 030	7 880	0.22
SA205-15	SAA205-15	15/16													0.21
SA205-16	SAA205-16	1													0.19
SA206	SAA206		30												0.31
SA206-17	SAA206-17	1-1/16													0.33
SA206-18	SAA206-18	1-1/8		62	35.7	23.8	16	8	44.5	15.9	6.0	1/4-28UNF M6 x 1.0	19 480	11 320	0.33
SA206-19	SAA206-19	1-3/16													0.3
SA206-20	SAA206-20	1-1/4S													0.28
SA207	SAA207		35												0.49
SA207-20	SAA207-20	1-1/4													0.52
SA207-21	SAA207-21	1-5/16		72	38.9	25.4	17	8.5	55.5	17.5	6.8	5/16-24UNF M8 x 1.0	25 680	15 310	0.5
SA207-22	SAA207-22	1-3/8													0.47
SA207-23	SAA207-23	1-7/16													0.45
SA208	SAA208		40												0.66
SA208-24	SAA208-24	1-1/2		80	43.7	30.2	18	9	60	18.3	6.8	5/16-24UNF M8 x 1.0	29 540	18 150	0.64
SA208-25	SAA208-25	1-9/16													0.61
SA209	SAA209		45												0.65
SA209-26	SAA209-26	1-5/8		85	43.7	30.2	19	9.5	63.5	18.3	6.8	5/16-24UNF M8 x 1.0	31 700	20 690	0.76
SA209-27	SAA209-27	1-11/16													0.73
SA209-28	SAA209-28	1-3/4													0.7
SA210	SAA210		50												0.7
SA210-30	SAA210-30	1-7/8		90	43.7	30.2	20	10	69.8	18.3	6.8	3/8-24UNF M10 x 1.25	35 100	23 190	0.833
SA210-31	SAA210-31	1-15/16													0.79
SA210-32	SAA210-32	2S													0.74
SA211	SAA211		55												0.77
SA211-32	SAA211-32	2		100	48.4	32.5	24	12	76.2	20.6	8	3/8-24UNF M10 x 1.25	43 400	29 240	0.96
SA211-34	SAA211-34	2-1/8													0.87
SA211-35	SAA211-35	2-3/16													0.81

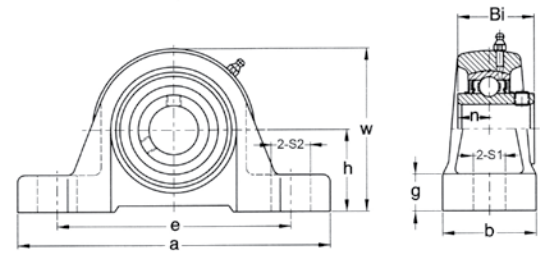
To order relubricatable type add suffix "G": SA205-16G.

ASK FOR NATIONAL QUALITY

Note actual products may differ from photos shown in this brochure.

Product availability and specifications are subject to change without notice.

UCPE200 SERIES PILLOW BLOCKS WIDE INNER RACE SET SCREW LOCKING

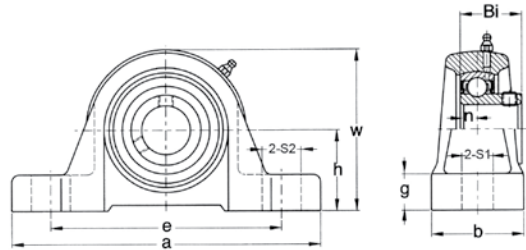


Bearing No.	Shaft Dia.		Dimensions (mm)										Bolt Size	Bearing No.	Housing No.	Weight (kg)
	In.	mm	h	a	e	b	S1	S2	g	w	Bi	n				
UCPE201-08	1/2		33.3	127	95	38	13	16	15	65	31	12.7	3/8 M10	UC201-08	PE204	0.8
UCPE202-10	5/8													UC202-10		
UCPE204	20	UC204														
UCPE204-12	3/4		36.6	140	105	38	13	16	16	70	34	14.3	3/8 M10	UC204-12	PE205	1
UCPE205	25	UC205														
UCPE205-14	7/8													UC205-14		
UCPE205-15	15/16		42.9	165	121	48	17	21	18	83	38.1	15.9	1/2 M14	UC205-15	PE206	1.6
UCPE205-16	1	UC205-16														
UCPE206	30	UC206														
UCPE206-17	1-1/16		47.6	167	127	48	17	21	19	94	42.9	17.5	1/2 M14	UC206-17	PE207	2.1
UCPE206-18	1-1/8	UC206-18														
UCPE206-19	1-3/16	UC206-19														
UCPE206-20	1-1/4S		49.2	184	137	54	17	25	19	100	49.2	19.0	1/2 M14	UC206-20	PE208	2.6
UCPE207	35	UC207														
UCPE207-20	1-1/4	UC207-20														
UCPE207-21	1-5/16		54	190	146	54	17	25	20	108	49.2	19.0	1/2 M14	UC207-21	PE209	3
UCPE207-22	1-3/8	UC207-22														
UCPE207-23	1-7/16	UC207-23														
UCPE208	40		57.2	206	159	60	20	25	22	114	51.6	19.0	5/8 M16	UC208	PE210	3.6
UCPE208-24	1-1/2	UC208-24														
UCPE208-25	1-9/16	UC208-25														
UCPE209	45		63.5	219	171	60	20	25	22	126	55.6	22.2	5/8 M16	UC209	PE211	4.4
UCPE209-26	1-5/8	UC209-26														
UCPE209-27	1-11/16	UC209-27														
UCPE209-28	1-3/4		69.8	241	184	70	20	25	25	138	65.1	25.4	5/8 M16	UC209-28	PE212	6.2
UCPE210	50	UC210														
UCPE210-30	1-7/8	UC210-30														
UCPE210-31	1-15/16		76.2	265	203	70	25	29	27	150	65.1	25.4	3/4 M20	UC210-31	PE213	7
UCPE210-32	2S	UC210-32														
UCPE211	55	UC211														
UCPE211-32	2		79.4	266	210	72	25	31	27	156	74.6	30.2	3/4 M20	UC211-32	PE214	7.6
UCPE211-34	2-1/8	UC211-34														
UCPE211-35	2-3/16	UC211-35														
UCPE212	60		82.6	275	217	74	25	31	28	163	77.8	33.3	3/4 M20	UC212	PE215	8.5
UCPE212-36	2-1/4	UC212-36														
UCPE212-38	2-3/8	UC212-38														
UCPE212-39	2-7/16		79.4	266	210	72	25	31	27	156	74.6	30.2	3/4 M20	UC212-39	PE214	7.6
UCPE213	65	UC213														
UCPE213-40	2-1/2	UC213-40														
UCPE214	70		82.6	275	217	74	25	31	28	163	77.8	33.3	3/4 M20	UC214	PE215	8.5
UCPE214-43	2-11/16	UC214-43														
UCPE214-44	2-3/4	UC214-44														
UCPE215	75		79.4	266	210	72	25	31	27	156	74.6	30.2	3/4 M20	UC215	PE215	8.5
UCPE215-47	2-15/16	UC215-47														
UCPE215-48	3	UC215-48														

ASK FOR NATIONAL QUALITY

Note actual products may differ from photos shown in this brochure.
Product availability and specifications are subject to change without notice.

SBPE200 SERIES PILLOW BLOCKS NARROW INNER RACE SET SCREW LOCKING

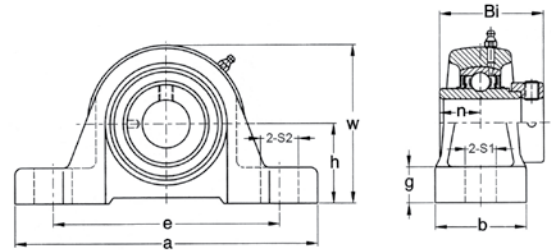


Bearing No.	Shaft Dia.		Dimensions (mm)										Bolt Size	Bearing No.	Housing No.	Weight (kg)
	In.	mm	h	a	e	b	S1	S2	g	w	Bi	n				
SBPE201-08	1/2		30.2	124	95	31	11	15	14	57.1	22	6	3/8 M10	SB201-08G	PE203	0.4
SBPE202-10	5/8													SB202-10G		
SBPE204		20	33.3	127	95	38	13	16	15	65	25	7	3/8 M10	SB204G	PE204	0.5
SBPE204-12	3/4													SB204-12G		
SBPE205		25	36.6	140	105	38	13	16	16	70	27	7.5	3/8 M10	SB205G	PE205	0.7
SBPE205-14	7/8													SB205-14G		
SBPE205-15	15/16													SB205-15G		
SBPE205-16	1													SB205-16G		
SBPE206		30	42.9	165	121	48	17	21	18	83	30	8	1/2 M14	SB206G	PE206	1.0
SBPE206-17	1-1/16													SB206-17G		
SBPE206-18	1-1/8													SB206-18G		
SBPE206-19	1-3/16													SB206-19G		
SBPE206-20	1-1/4S													SB206-20G		
SBPE207		35	47.6	167	127	48	17	21	19	94	32	8.5	1/2 M14	SB207G	PE207	1.3
SBPE207-20	1-1/4													SB207-20G		
SBPE207-21	1-5/16													SB207-21G		
SBPE207-22	1-3/8													SB207-22G		
SBPE207-23	1-7/16													SB207-23G		
SBPE208		40	49.2	184	137	54	17	25	19	100	34	9	1/2 M14	SB208G	PE208	1.75
SBPE208-24	1-1/2													SB208-24G		
SBPE208-25	1-9/16													SB208-25G		

ASK FOR NATIONAL QUALITY

Note actual products may differ from photos shown in this brochure.
Product availability and specifications are subject to change without notice.

HCPE200 SERIES PILLOW BLOCKS WIDE INNER RACE ECCENTRIC LOCKING COLLAR

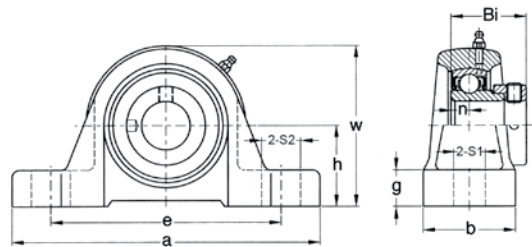


Bearing No.	Shaft Dia.		Dimensions (mm)										Bolt Size	Bearing No.	Housing No.	Weight (kg)
	In.	mm	h	a	e	b	S1	S2	g	w	Bi	n				
HCPE201-08	1/2		33.3	127	95	38	13	16	15	65	43.5	17	3/8 M10	HC201-08	PE204	0.85
HCPE202-10	5/8													HC202-10		
HCPE204		20												HC204		
HCPE204-12	3/4													HC204-12		
HCPE205		25	36.6	140	105	38	13	16	16	70	44.3	17.4	3/8 M10	HC205	PE205	1.06
HCPE205-14	7/8													HC205-14		
HCPE205-15	15/16													HC205-15		
HCPE205-16	1													HC205-16		
HCPE206		30	42.9	165	121	48	17	21	18	83	48.3	18.2	1/2 M14	HC206	PE206	1.7
HCPE206-17	1-1/16													HC206-17		
HCPE206-18	1-1/8													HC206-18		
HCPE206-19	1-3/16													HC206-19		
HCPE206-20	1-1/4S													HC206-20		
HCPE207		35	47.6	167	127	48	17	21	19	94	51.1	18.8	1/2 M14	HC207	PE207	2.25
HCPE207-20	1-1/4													HC207-20		
HCPE207-21	1-5/16													HC207-21		
HCPE207-22	1-3/8													HC207-22		
HCPE207-23	1-7/16													HC207-23		
HCPE208		40	49.2	184	137	54	17	25	19	100	56.3	21.4	1/2 M14	HC208	PE208	2.8
HCPE208-24	1-1/2													HC208-24		
HCPE208-25	1-9/16													HC208-25		
HCPE209		45	54	190	146	54	17	25	20	108	56.3	21.4	1/2 M14	HC209	PE209	3.15
HCPE209-26	1-5/8													HC209-26		
HCPE209-27	1-11/16													HC209-27		
HCPE209-28	1-3/4													HC209-28		
HCPE210		50	57.2	206	159	60	20	25	22	114	62.7	24.6	5/8 M16	HC210	PE210	3.8
HCPE210-30	1-7/8													HC210-30		
HCPE210-31	1-15/16													HC210-31		
HCPE210-32	2S													HC210-32		
HCPE211		55	63.5	219	171	60	20	25	22	126	71.4	27.7	5/8 M16	HC211	PE211	4.7
HCPE211-32	2													HC211-32		
HCPE211-34	2-1/8													HC211-34		
HCPE211-35	2-3/16													HC211-35		
HCPE212		60	69.8	241	184	70	20	25	25	138	77.7	30.9	5/8 M16	HC212	PE212	6.6
HCPE212-36	2-1/4													HC212-36		
HCPE212-38	2-3/8													HC212-38		
HCPE212-39	2-7/16													HC212-39		
HCPE213		65	76.2	265	203	70	25	29	27	150	85.7	34.1	3/4 M20	HC213	PE213	7.5
HCPE213-40	2-1/2													HC213-40		
HCPE214		70	79.4	266	210	72	25	31	27	156	85.7	34.1	3/4 M20	HC214	PE214	8.0
HCPE214-43	2-11/16													HC214-43		
HCPE214-44	2-3/4													HC214-44		
HCPE215		75	82.6	275	217	74	25	31	28	163	92.1	37.3	3/4 M20	HC215	PE215	9.0
HCPE215-47	2-15/16													HC215-47		
HCPE215-48	3													HC215-48		

ASK FOR NATIONAL QUALITY

Note actual products may differ from photos shown in this brochure.
Product availability and specifications are subject to change without notice.

SAPE200 SERIES PILLOW BLOCKS NARROW INNER RACE ECCENTRIC LOCKING COLLAR



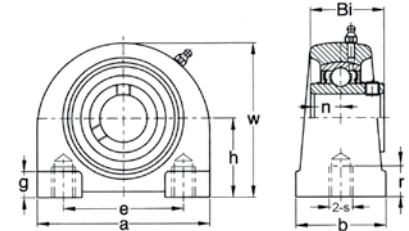
Bearing No.	Shaft Dia.		Dimensions (mm)										Bolt Size	Bearing No.	Housing No.	Weight (kg)
	In.	mm	h	a	e	b	S1	S2	g	w	Bi	n				
SAPE201-08	1/2		30.2	124	95	31	11	15	14	57.1	28.6	6	3/8 M10	SA201-08G	PE203	0.45
SAPE202-10	5/8													SA202-10G		
SAPE204		20	33.3	127	95	38	13	16	15	65	31	7	3/8 M10	SA204G	PE204	0.55
SAPE204-12	3/4													SA204-12G		
SAPE205		25	36.6	140	105	38	13	16	16	70	31	7.5	3/8 M10	SA205G	PE205	0.8
SAPE205-14	7/8													SA205-14G		
SAPE205-15	15/16													SA205-15G		
SAPE205-16	1													SA205-16G		
SAPE206		30	42.9	165	121	48	17	21	18	83	35.7	8	1/2 M14	SA206G	PE206	1.2
SAPE206-17	1-1/16													SA206-17G		
SAPE206-18	1-1/8													SA206-18G		
SAPE206-19	1-3/16													SA206-19G		
SAPE206-20	1-1/4S													SA206-20G		
SAPE207		35	47.6	167	127	48	17	21	19	94	38.9	8.5	1/2 M14	SA207G	PE207	1.5
SAPE207-20	1-1/4													SA207-20G		
SAPE207-21	1-5/16													SA207-21G		
SAPE207-22	1-3/8													SA207-22G		
SAPE207-23	1-7/16													SA207-23G		
SAPE208		40	49.2	184	137	54	17	25	19	100	43.7	9	1/2 M14	SA208G	PE208	2
SAPE208-24	1-1/2													SA208-24G		
SAPE208-25	1-9/16													SA208-25G		
SAPE209		45	54	190	146	54	17	25	20	108	43.7	9.5	1/2 M14	SA209G	PE209	2.2
SAPE209-26	1-5/8													SA209-26G		
SAPE209-27	1-11/16													SA209-27G		
SAPE209-28	1-3/4													SA209-28G		
SAPE210		50	57.2	206	159	60	20	25	22	114	43.7	10	5/8 M16	SA210G	PE210	2.4
SAPE210-30	1-7/8													SA210-30G		
SAPE210-31	1-15/16													SA210-31G		
SAPE210-32	2S													SA210-32G		
SAPE211		55	63.5	219	171	60	20	25	22	126	48.4	12	5/8 M16	SA211G	PE211	2.8
SAPE211-32	2													SA211-32G		
SAPE211-35	2-3/16													SA211-35G		

ASK FOR NATIONAL QUALITY

Note actual products may differ from photos shown in this brochure.
Product availability and specifications are subject to change without notice.



UCTB200 SERIES
TAPPED BASE PILLOW BLOCKS
WIDE INNER RACE
 SET SCREW LOCKING
 IMPERIAL BOLT HOLES



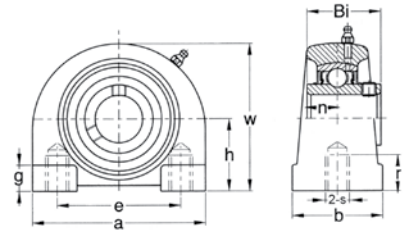
Bearing No.	Shaft Dia.		Dimensions (mm)										Bearing No.	Housing No.	Weight (kg)
	In.	mm	h	a	e	b	s	r	w	Bi	n	g			
UCTB201-08	1/2		33.3	73	50.8	38.1	3/8-16UNC	11	65.1	31.0	12.7	8	UC201-08	TB204	0.6
UCTB202-10	5/8												UC202-10		
UCTB204		20											UC204		
UCTB204-12	3/4												UC204-12		
UCTB205		25	36.5	76.2	50.8	38.1	3/8-16UNC	12	71.4	34.0	14.3	10	UC205	TB205	0.8
UCTB205-14	7/8												UC205-14		
UCTB205-15	15/16												UC205-15		
UCTB205-16	1												UC205-16		
UCTB206		30	42.9	101.6	76.2	38.1	7/16-14UNC	16	85.7	38.1	15.9	10	UC206	TB206	1.2
UCTB206-17	1-1/16												UC206-17		
UCTB206-18	1-1/8												UC206-18		
UCTB206-19	1-3/16												UC206-19		
UCTB206-20	1-1/4S												UC206-20		
UCTB207		35	47.6	107.9	82.5	47.6	1/2-13UNC	20	95.3	42.9	17.5	12	UC207	TB207	1.7
UCTB207-20	1-1/4												UC207-20		
UCTB207-21	1-5/16												UC207-21		
UCTB207-22	1-3/8												UC207-22		
UCTB207-23	1-7/16												UC207-23		
UCTB208		40	49.2	117.5	88.9	47.6	1/2-13UNC	20	100.0	49.2	19.0	12	UC208	TB208	2.0
UCTB208-24	1-1/2												UC208-24		
UCTB208-25	1-9/16												UC208-25		
UCTB209		45	54.0	127.0	95.3	50.8	1/2-13UNC	20	107.9	49.2	19.0	12	UC209	TB209	2.2
UCTB209-26	1-5/8												UC209-26		
UCTB209-27	1-11/16												UC209-27		
UCTB209-28	1-3/4												UC209-28		
UCTB210		50	57.5	139.7	101.6	50.8	5/8-11UNC	23	117.5	51.6	19.0	14	UC210	TB210	2.9
UCTB210-30	1-7/8												UC210-30		
UCTB210-31	1-15/16												UC210-31		
UCTB210-32	2S												UC210-32		

BEARING UNITS

ASK FOR NATIONAL QUALITY

Note actual products may differ from photos shown in this brochure.
 Product availability and specifications are subject to change without notice.

UCPA200 SERIES
TAPPED BASE PILLOW BLOCKS
WIDE INNER RACE
 SET SCREW LOCKING
 METRIC BOLT HOLES

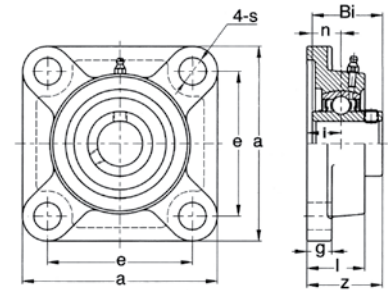


Bearing No.	Shaft Dia.		Dimensions (mm)										Bearing No.	Housing No.	Weight (kg)
	In.	mm	h	a	e	b	s	r	g	w	Bi	n			
UCPA201-08	1/2		33.3	76.2	52	38	M10 x 1.5	15	8	61.9	31	12.7	UC201-08	PA204	0.6
UCPA202-10	5/8												UC202-10		
UCPA204		20											UC204		
UCPA204-12	3/4												UC204-12		
UCPA205		25	36.5	84.1	56	38	M10 x 1.5	15	10	72.2	34	14.3	UC205	PA205	0.8
UCPA205-14	7/8												UC205-14		
UCPA205-15	15/16												UC205-15		
UCPA205-16	1												UC205-16		
UCPA206		30	42.9	93.7	66	48	M14 x 2.0	18	10	84.1	38.1	15.9	UC206	PA206	1.2
UCPA206-17	1-1/16												UC206-17		
UCPA206-18	1-1/8												UC206-18		
UCPA206-19	1-3/16												UC206-19		
UCPA206-20	1-1/4S												UC206-20		
UCPA207		35	47.6	110.3	80	48	M14 x 2.0	20	12	95.3	42.9	17.5	UC207	PA207	1.7
UCPA207-20	1-1/4												UC207-20		
UCPA207-21	1-5/16												UC207-21		
UCPA207-22	1-3/8												UC207-22		
UCPA207-23	1-7/16												UC207-23		
UCPA208		40	49.2	115.9	84	54	M14 x 2.0	20	12	100.0	49.2	19	UC208	PA208	1.9
UCPA208-24	1-1/2												UC208-24		
UCPA208-25	1-9/16												UC208-25		
UCPA209		45	54.2	119.8	90	54	M14 x 2.0	25	12	107.9	49.2	19	UC209	PA209	2.2
UCPA209-26	1-5/8												UC209-26		
UCPA209-27	1-11/16												UC209-27		
UCPA209-28	1-3/4												UC209-28		
UCPA210		50	57.2	130.2	94	60	M16 x 2.0	25	14	115.9	51.6	19	UC210	PA210	2.6
UCPA210-30	1-7/8												UC210-30		
UCPA210-31	1-15/16												UC210-31		
UCPA210-32	2S												UC210-32		
UCPA211		55	63.5	140	104	66	M16 x 2.0	25	14	125	55.6	22.2	UC211	PA211	3.5
UCPA211-32	2												UC211-32		
UCPA211-34	2-1/8												UC211-34		
UCPA211-35	2-3/16												UC211-35		
UCPA212		60	69.9	150	114	68	M16 x 2.0	25	15	138	65.1	25.4	UC212	PA212	4.2
UCPA212-36	2-1/4												UC212-36		
UCPA212-38	2-3/8												UC212-38		
UCPA212-39	2-7/16												UC212-39		
UCPA213		65	76.2	160	124	70	M16 x 2.0	25	15	150	65.1	25.4	UC213	PA213	6.1
UCPA213-40	2-1/2												UC213-40		

ASK FOR NATIONAL QUALITY

Note actual products may differ from photos shown in this brochure.
 Product availability and specifications are subject to change without notice.

UCF200 SERIES
4-BOLT FLANGE
WIDE INNER RACE
SET SCREW LOCKING

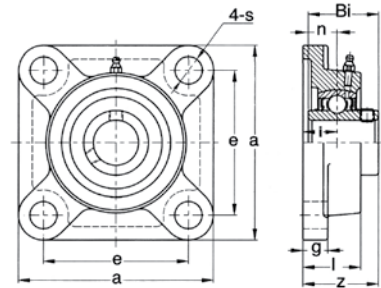


Bearing No.	Shaft Dia.		Dimensions (mm)									Bolt Size	Bearing No.	Housing No.	Weight (kg)
	In.	mm	a	e	i	g	l	s	z	Bi	n				
UCF201-08	1/2		86	63.5	15	11	25.4	12	33.3	31	12.7	3/8 M10	UC201-08	F204	0.7
UCF202-10	5/8												UC202-10		
UCF204	3/4												UC204		
UCF204-12		20											UC204-12		
UCF205		25	95	70	16	13	27	12	35.7	34	14.3	3/8 M10	UC205	F205	0.8
UCF205-14	7/8												UC205-14		
UCF205-15	15/16												UC205-15		
UCF205-16	1												UC205-16		
UCF206		30	108	83	18	13	31	12	40.2	38.1	15.9	3/8 M10	UC206	F206	1.0
UCF206-17	1-1/16												UC206-17		
UCF206-18	1-1/8												UC206-18		
UCF206-19	1-3/16												UC206-19		
UCF206-20	1-1/4S												UC206-20		
UCF207		35	117	92	19	15	34	14	44.4	42.9	17.5	7/16 M12	UC207	F207	1.4
UCF207-20	1-1/4												UC207-20		
UCF207-21	1-5/16												UC207-21		
UCF207-22	1-3/8												UC207-22		
UCF207-23	1-7/16												UC207-23		
UCF208		40	130	102	21	15	36	16	51.2	49.2	19	1/2 M14	UC208	F208	1.8
UCF208-24	1-1/2												UC208-24		
UCF208-25	1-9/16												UC208-25		
UCF209		45	137	105	22	16	38	16	52.2	49.2	19	1/2 M14	UC209	F209	2.2
UCF209-26	1-5/8												UC209-26		
UCF209-27	1-11/16												UC209-27		
UCF209-28	1-3/4												UC209-28		
UCF210		50	143	111	22	16	40	16	54.6	51.6	19	1/2 M14	UC210	F210	2.4
UCF210-30	1-7/8												UC210-30		
UCF210-31	1-15/16												UC210-31		
UCF210-32	2S												UC210-32		
UCF211		55	162	130	25	18	43	19	58.4	55.6	22.2	5/8 M16	UC211	F211	3.6
UCF211-32	2												UC211-32		
UCF211-34	2-1/8												UC211-34		
UCF211-35	2-3/16		175	143	29	18	48	19	68.7	65.1	25.4	5/8 M16	UC212	F212	4.4
UCF212		60											UC212		
UCF212-36	2-1/4												UC212-36		
UCF212-38	2-3/8												UC212-38		
UCF212-39	2-7/16		187	149	30	22	50	19	69.7	65.1	25.4	5/8 M16	UC212-39	F213	5.5
UCF213		65											UC213		
UCF213-40	2-1/2												UC213-40		
UCF214		70	193	152	31	22	54	19	75.4	74.6	30.2	5/8 M16	UC214	F214	6.1
UCF214-43	2-11/16												UC214-43		
UCF214-44	2-3/4												UC214-44		
UCF215		75	200	159	34	22	56	19	78.5	77.8	33.3	5/8 M16	UC215	F215	6.9
UCF215-47	2-15/16												UC215-47		
UCF215-48	3												UC215-48		

ASK FOR NATIONAL QUALITY

Note actual products may differ from photos shown in this brochure.
 Product availability and specifications are subject to change without notice.

SBF200 SERIES
4-BOLT FLANGE
NARROW INNER RACE
 SET SCREW LOCKING

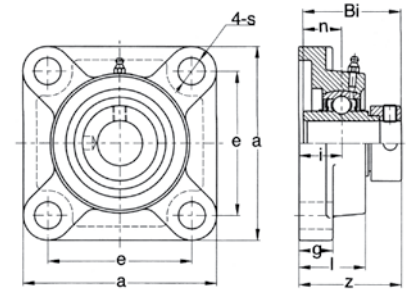


Bearing No.	Shaft Dia.		Dimensions (mm)									Bolt Size	Bearing No.	Housing No.	Weight (kg)
	In.	mm	a	e	i	g	l	s	z	Bi	n				
SBF201-08	1/2		76	53.9	9.5	11	17.9	10	25	22	6	3/8 M10	SB201-08G	F203	0.44
SBF202-10	5/8												SB202-10G		
SBF204		20	86	63.5	15	11	25.4	12	32.9	25	7	3/8 M10	SB204G	F204	0.61
SBF204-12	3/4												SB204-12G		
SBF205		25	95	70	16	13	27	12	35.3	27	7.5	3/8 M10	SB205G	F205	0.85
SBF205-14	7/8												SB205-14G		
SBF205-15	15/16												SB205-15G		
SBF205-16	1												SB205-16G		
SBF206		30	108	83	18	13	31	12	40	30	8	3/8 M10	SB206G	F206	1.2
SBF206-17	1-1/16												SB206-17G		
SBF206-18	1-1/8												SB206-18G		
SBF206-19	1-3/16												SB206-19G		
SBF206-20	1-1/4S												SB206-20G		
SBF207		35	117	92	19	15	34	14	42.5	32	8.5	1/2 M12	SB207G	F207	1.7
SBF207-20	1-1/4												SB207-20G		
SBF207-21	1-5/16												SB207-21G		
SBF207-22	1-3/8												SB207-22G		
SBF207-23	1-7/16												SB207-23G		
SBF208		40	130	102	21	15	36	16	44.1	34	9	1/2 M12	SB208G	F208	2.2
SBF208-24	1-1/2												SB208-24G		
SBF208-25	1-9/16												SB208-25G		

ASK FOR NATIONAL QUALITY

Note actual products may differ from photos shown in this brochure.
 Product availability and specifications are subject to change without notice.

HCFS200 SERIES
4-BOLT FLANGE
WIDE INNER RACE
 ECCENTRIC LOCKING COLLAR

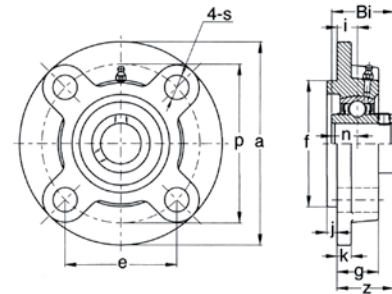


Bearing No.	Shaft Dia.		Dimensions (mm)									Bolt Size	Bearing No.	Housing No.	Weight (kg)
	In.	mm	a	e	i	g	l	s	z	Bi	n				
HCFS201-08	1/2		86	63.5	19	15	29.5	11.5	45.5	43.5	17	3/8 M10	HC201-08	FS204	0.8
HCFS202-10	5/8												HC202-10		
HCFS204		20											HC204		
HCFS204-12	3/4		93	70	19	15	30	11.5	45.8	44.3	17.4	3/8 M10	HC204-12	FS205	0.9
HCFS205		25											HC205		
HCFS205-14	7/8												HC205-14		
HCFS205-15	15/16		106	82.5	20	16	32.5	13	50	48.3	18.2	3/8 M10	HC205-15	FS206	1.3
HCFS205-16	1												HC205-16		
HCFS206		30											HC206		
HCFS206-17	1-1/16		106	82.5	20	16	32.5	13	50	48.3	18.2	3/8 M10	HC206-17	FS206	1.3
HCFS206-18	1-1/8												HC206-18		
HCFS206-19	1-3/16												HC206-19		
HCFS206-20	1-1/4S												HC206-20		
HCFS207		35	116	92	21	17	35	13	53.3	51.1	18.8	1/2 M12	HC207	FS207	1.8
HCFS207-20	1-1/4												HC207-20		
HCFS207-21	1-5/16												HC207-21		
HCFS207-22	1-3/8												HC207-22		
HCFS207-23	1-7/16												HC207-23		
HCFS208		40	129	101.5	24	17	39	14	58.9	56.3	21.4	1/2 M12	HC208	FS208	2.1
HCFS208-24	1-1/2												HC208-24		
HCFS208-25	1-9/16												HC208-25		
HCFS209		45	135	105	24	18	40	16	58.9	56.3	21.4	1/2 M12	HC209	FS209	2.5
HCFS209-26	1-5/8												HC209-26		
HCFS209-27	1-11/16												HC209-27		
HCFS209-28	1-3/4												HC209-28		
HCFS210		50	143	111	28	20	45	16	66.1	62.7	24.6	5/8 M16	HC210	FS210	2.9
HCFS210-30	1-7/8												HC210-30		
HCFS210-31	1-15/16												HC210-31		
HCFS210-32	2S												HC210-32		
HCFS211		55	162	130	31	21	49	17	74.6	71.4	27.7	5/8 M16	HC211	FS211	4.2
HCFS211-32	2												HC211-32		
HCFS211-34	2-1/8												HC211-34		
HCFS211-35	2-3/16												HC211-35		
HCFS212		60	175	143	34	22	53.5	17	80.8	77.7	30.9	5/8 M16	HC212	FS212	5.2
HCFS212-36	2-1/4												HC212-36		
HCFS212-38	2-3/8												HC212-38		
HCFS212-39	2-7/16												HC212-39		
HCFS213		65	184	149	38	22	58	18	89.6	85.7	34.1	5/8 M16	HC213	FS213	6.1
HCFS213-40	2-1/2												HC213-40		
HCFS214		70	188	152	38	23	60	18	89.6	85.7	34.1	5/8 M16	HC214	FS214	6
HCFS214-44	2-3/4												HC214-44		
HCFS215		75	200	152.4	41	24	62	20	95.8	92.1	37.3	5/8 M16	HC215	FS215	7.5
HCFS215-47	2-15/16												HC215-47		
HCFS215-48	3												HC215-48		

ASK FOR NATIONAL QUALITY

Note actual products may differ from photos shown in this brochure.
 Product availability and specifications are subject to change without notice.

UCFC200 SERIES 4-BOLT FLANGE CARTRIDGE WIDE INNER RACE SET SCREW LOCKING

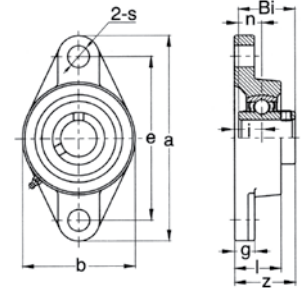


Bearing No.	Shaft Dia.		Dimensions (mm)												Bolt Size	Bearing No.	Housing No.	Weight (kg)
	In.	mm	a	p	e	i	s	j	k	g	f	z	Bi	n				
UCFC201-08	1/2		100	78	55.1	10	12	5	7	20.5	62	28.3	31	12.7	M10 3/8	UC201-08	FC204	0.8
UCFC202-10	5/8															UC202-10		
UCFC204		20														UC204		
UCFC204-12	3/4															UC204-12		
UCFC205		25	115	90	63.6	10	12	6	7	21	70	29.7	34	14.3	M10 3/8	UC205	FC205	1
UCFC205-14	7/8															UC205-14		
UCFC205-15	15/16															UC205-15		
UCFC205-16	1															UC205-16		
UCFC206		30	125	100	70.7	10	12	8	8	23	80	32.2	38.1	15.9	M10 3/8	UC206	FC206	1.3
UCFC206-17	1-1/16															UC206-17		
UCFC206-18	1-1/8															UC206-18		
UCFC206-19	1-3/16															UC206-19		
UCFC206-20	1-1/4S															UC206-20		
UCFC207		35	135	110	77.8	11	14	8	9	26	90	36.4	42.9	17.5	M12 7/16	UC207	FC207	1.6
UCFC207-20	1-1/4															UC207-20		
UCFC207-21	1-5/16															UC207-21		
UCFC207-22	1-3/8															UC207-22		
UCFC207-23	1-7/16															UC207-23		
UCFC208		40	145	120	84.4	11	14	10	9	26	100	21.2	49.2	19	M12 7/16	UC208	FC208	2.1
UCFC208-24	1-1/2															UC208-24		
UCFC208-25	1-9/16															UC208-25		
UCFC209		45	160	132	93.3	10	16	12	14	26	105	40.2	49.2	19	M14 1/2	UC209	FC209	2.7
UCFC209-26	1-5/8															UC209-26		
UCFC209-27	1-11/16															UC209-27		
UCFC209-28	1-3/4															UC209-28		
UCFC210		50	165	138	97.6	10	16	12	14	28	110	42.6	51.6	19	M14 1/2	UC210	FC210	3.1
UCFC210-30	1-7/8															UC210-30		
UCFC210-31	1-15/16															UC210-31		
UCFC210-32	2S															UC210-32		
UCFC211		55	185	150	106.1	13	19	12	15	31	125	46.4	55.6	22.2	M16 5/8	UC211	FC211	4.2
UCFC211-32	2															UC211-32		
UCFC211-34	2-1/8															UC211-34		
UCFC211-35	2-3/16															UC211-35		
UCFC212		60	195	160	113.1	17	19	12	15	36	135	56.7	65.1	25.4	M16 5/8	UC212	FC212	5.3
UCFC212-36	2-1/4															UC212-36		
UCFC212-38	2-3/8															UC212-38		
UCFC212-39	2-7/16															UC212-39		

ASK FOR NATIONAL QUALITY

Note actual products may differ from photos shown in this brochure.
Product availability and specifications are subject to change without notice.

UCFL200 SERIES
2-BOLT FLANGE
WIDE INNER RACE
SET SCREW LOCKING



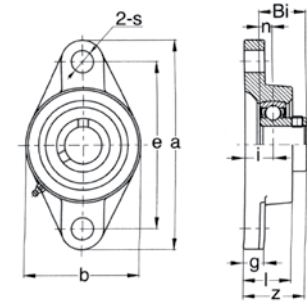
Bearing No.	Shaft Dia.		Dimensions (mm)										Bolt Size	Bearing No.	Housing No.	Weight (kg)
	In.	mm	a	e	i	g	l	s	b	z	Bi	n				
UCFL201-08	1/2		113	90	15	12	25.5	12	60	33.3	31	12.7	M10 3/8	UC201-08	FL204	0.5
UCFL202-10	5/8													UC202-10		
UCFL204-12	3/4													UC204-12		
UCFL204		20	130	99	16	14	27	16	68	35.7	34	14.3	M14 1/2	UC204	FL205	0.6
UCFL205		25												UC205		
UCFL205-14	7/8													UC205-14		
UCFL205-15	15/16		148	117	18	14	31	16	80	40.2	38.1	15.9	M14 1/2	UC205-15	FL206	0.9
UCFL205-16	1													UC206		
UCFL206		30												UC206-17		
UCFL206-17	1-1/16		161	130	19	16	34	16	90	44.4	42.9	17.5	M14 1/2	UC206-18	FL207	1.2
UCFL206-18	1-1/8													UC206-19		
UCFL206-19	1-3/16													UC206-UC20		
UCFL206-20	1-1/4S		175	144	21	16	36	16	100	51.2	49.2	19	M14 1/2	UC207	FL208	1.6
UCFL207		35												UC207-20		
UCFL207-20	1-1/4													UC207-21		
UCFL207-21	1-5/16		188	148	22	18	38	19	108	52.2	49.2	19	M16 5/8	UC207-22	FL209	1.9
UCFL207-22	1-3/8													UC209-28		
UCFL207-23	1-7/16													UC210		
UCFL208		40	197	157	22	18	40	19	116	54.6	51.6	19	M16 5/8	UC210-30	FL210	2.2
UCFL208-24	1-1/2													UC210-31		
UCFL208-25	1-9/16													UC210-32		
UCFL209		45	224	184	25	20	43	19	130	58.4	55.6	22.2	M16 5/8	UC211	FL211	3.1
UCFL209-26	1-5/8													UC211-32		
UCFL209-27	1-11/16													UC211-34		
UCFL209-28	1-3/4		250	202	29	20	48	23	140	68.7	65.1	25.4	M20 3/4	UC211-35	FL212	4
UCFL210		50												UC212		
UCFL210-30	1-7/8													UC212-36		
UCFL210-31	1-15/16		258	210	30	24	50	23	155	69.7	65.1	25.4	M20 3/4	UC212-38	FL213	5
UCFL210-32	2S													UC212-39		
UCFL210-32														UC213		
UCFL211		55	265	216	31	24	54	23	160	75.4	74.6	30.2	M20 3/4	UC213-40	FL214	5.6
UCFL211-32	2													UC214		
UCFL211-34	2-1/8													UC214-43		
UCFL211-35	2-3/16		275	225	34	24	56	23	165	78.5	77.8	33.3	M20 3/4	UC214-44	FL215	6.2
UCFL212		60												UC215		
UCFL212-36	2-1/4													UC215-47		
UCFL212-38	2-3/8		275	225	34	24	56	23	165	78.5	77.8	33.3	M20 3/4	UC215-48	FL215	6.2
UCFL212-39	2-7/16															
UCFL213		65														
UCFL213-40	2-1/2															
UCFL214		70														
UCFL214-43	2-11/16															
UCFL214-44	2-3/4															
UCFL215		75														
UCFL215-47	2-15/16															
UCFL215-48	3															

BEARING UNITS

ASK FOR NATIONAL QUALITY

Note actual products may differ from photos shown in this brochure.
 Product availability and specifications are subject to change without notice.

SBFL200 SERIES
2-BOLT FLANGE
NARROW INNER RACE
 SET SCREW LOCKING



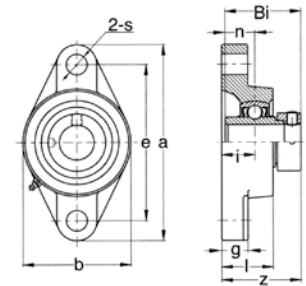
Bearing No.	Shaft Dia.		Dimensions (mm)										Bolt Size	Bearing No.	Housing No.	Weight (kg)
	In.	mm	a	e	i	g	l	s	b	z	Bi	n				
SBFL201-08	1/2		99	76.5	15	13	22	11.5	57	29	22	6.0	3/8 M10	SB201-08G	FL203	0.38
SBFL202-10	5/8													SB202-10G		
SBFL204		20	113	90	15	12	25.5	12	60	33	25	7.0	3/8 M10	SB204G	FL204	0.4
SBFL204-12	3/4													SB204-12G		
SBFL205		25	130	99	16	14	27	16	68	35.5	27	7.5	1/2 M14	SB205G	FL205	0.5
SBFL205-14	7/8													SB205-14G		
SBFL205-15	15/16													SB205-15G		
SBFL205-16	1													SB205-16G		
SBFL206		30	148	117	18	14	31	16	80	40.0	30	8.0	1/2 M14	SB206G	FL206	0.8
SBFL206-17	1-1/16													SB206-17G		
SBFL206-18	1-1/8													SB206-18G		
SBFL206-19	1-3/16													SB206-19G		
SBFL206-20	1-1/4S													SB206-20G		
SBFL207		35	161	130	19	16	34	16	90	42.5	32	8.5	1/2 M14	SB207G	FL207	1.18
SBFL207-20	1-1/4													SB207-20G		
SBFL207-21	1-5/16													SB207-21G		
SBFL207-22	1-3/8													SB207-22G		
SBFL207-23	1-7/16													SB207-23G		
SBFL208		40	175	144	21	16	36	16	100	46	34	9.0	1/2 M14	SB208G	FL208	1.54
SBFL208-24	1-1/2													SB208-24G		
SBFL208-25	1-9/16													SB208-25G		

ASK FOR NATIONAL QUALITY

Note actual products may differ from photos shown in this brochure.
 Product availability and specifications are subject to change without notice.



HCFT200 SERIES
2-BOLT FLANGE
WIDE INNER RACE
 ECCENTRIC LOCKING COLLAR



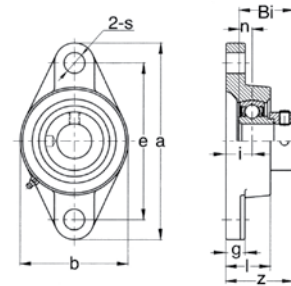
Bearing No.	Shaft Dia.		Dimensions (mm)										Bolt Size	Bearing No.	Housing No.	Weight (kg)
	In.	mm	a	e	i	g	l	s	b	z	Bi	n				
HCFT201-08	1/2		112.5	90	19	15	29.5	11.5	61	45.4	43.5	17.1	3/8 M10	HC201-08	FT204	0.6
HCFT202-10	5/8													HC202-10		
HCFT204		20												HC204		
HCFT204-12	3/4		123	99	19	15	30	11.5	70	45.8	44.3	17.5	3/8 M10	HC204-12	FT205	0.8
HCFT205		25												HC205		
HCFT205-14	7/8													HC205-14		
HCFT205-15	15/16		142	116.5	20	16	32.5	11.5	82	50	48.3	18.3	3/8 M10	HC205-15	FT206	1.1
HCFT205-16	1													HC205-16		
HCFT206		30												HC206		
HCFT206-17	1-1/16		158	130	21	17	36	14	94	53.3	51.1	18.8	7/16 M12	HC206-17	FT207	1.4
HCFT206-18	1-1/8													HC206-18		
HCFT206-19	1-3/16													HC206-19		
HCFT206-20	1-1/4S		172	143.5	24	17	39	14	103	58.9	56.3	21.4	7/16 M12	HC206-20	FT208	1.8
HCFT207		35												HC207		
HCFT207-20	1-1/4													HC207-20		
HCFT207-21	1-5/16		180	148.5	24	18	40	16	108	58.9	56.3	21.4	1/2 M14	HC207-21	FT209	2.1
HCFT207-22	1-3/8													HC207-22		
HCFT207-23	1-7/16													HC207-23		
HCFT208		40	190	157	28	20	45	18	114	66.1	62.7	24.6	5/8 M16	HC208	FT210	2.5
HCFT208-24	1-1/2													HC210-30		
HCFT208-25	1-9/16													HC210-31		
HCFT209		45	217	184	31	21	48	18	128	74.6	71.4	27.8	5/8 M16	HC210-32	FT211	3.5
HCFT209-26	1-5/8													HC211		
HCFT209-27	1-11/16													HC211-32		
HCFT209-28	1-3/4		237	202	34	21	53	18	138	80.1	77.7	31.0	5/8 M16	HC211-34	FT212	4.5
HCFT210		50												HC211-35		
HCFT210-30	1-7/8													HC212		
HCFT210-31	1-15/16		256	210	38	22	56	21	152	89.6	85.7	34.1	5/8 M18	HC212-36	FT213	5.6
HCFT210-32	2S													HC212-38		
HCFT211		55												HC212-39		
HCFT211-32	2		264	216	38	23	58	21	157	89.6	85.7	34.1	5/8 M18	HC213	FT214	5.7
HCFT211-34	2-1/8													HC214		
HCFT211-35	2-3/16													HC214-44		
HCFT212		60	275	225	41	24	62	21	164	95.8	92.1	37.3	5/8 M18	HC215	FT215	6.6
HCFT212-36	2-1/4													HC215-47		
HCFT212-38	2-3/8													HC215-48		
HCFT212-39	2-7/16															
HCFT213		65														
HCFT213-40	2-1/2															
HCFT214		70														
HCFT214-44	2-3/4															
HCFT215		75														
HCFT215-47	2-15/16															
HCFT215-48	3															

BEARING UNITS

ASK FOR NATIONAL QUALITY

Note actual products may differ from photos shown in this brochure.
 Product availability and specifications are subject to change without notice.

SAFL200 SERIES 2-BOLT FLANGE NARROW INNER RACE ECCENTRIC LOCKING COLLAR

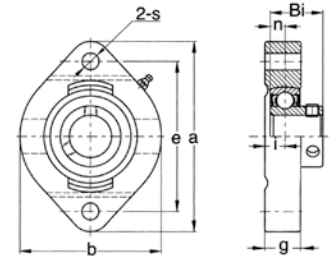


Bearing No.	Shaft Dia.		Dimensions (mm)										Bolt Size	Bearing No.	Housing No.	Weight (kg)
	In.	mm	a	e	i	g	l	s	b	z	Bi	n				
SAFL201-08	1/2		99	76.5	15	13	25.5	11.5	57	35.6	28.6	6.0	3/8 M10	SA201-08G	FL203	0.41
SAFL202-10	5/8													SA202-10G		
SAFL204		20	113	90	15	12	25.5	12	60	39	31	7.0	3/8 M10	SA204G	FL204	0.43
SAFL204-12	3/4													SA204-12G		
SAFL205		25	130	99	16	14	27	16	68	39.5	31	7.5	1/2 M14	SA205G	FL205	0.53
SAFL205-14	7/8													SA205-14G		
SAFL205-15	15/16													SA205-15G		
SAFL205-16	1													SA205-16G		
SAFL206		30	148	117	18	14	31	16	80	45.7	35.7	8.0	1/2 M14	SA206G	FL206	0.84
SAFL206-17	1-1/16													SA206-17G		
SAFL206-18	1-1/8													SA206-18G		
SAFL206-19	1-3/16													SA206-19G		
SAFL206-20	1-1/4S													SA206-20G		
SAFL207		35	161	130	19	16	34	16	90	49.4	38.9	8.5	1/2 M14	SA207G	FL207	1.26
SAFL207-20	1-1/4													SA207-20G		
SAFL207-21	1-5/16													SA207-21G		
SAFL207-22	1-3/8													SA207-22G		
SAFL207-23	1-7/16													SA207-23G		
SAFL208		40	175	144	21	16	36	16	100	55.7	43.7	9.0	1/2 M14	SA208G	FL208	1.58
SAFL208-24	1-1/2													SA208-24G		
SAFL208-25	1-9/16													SA208-25G		
SAFL209		45	188	148	22	18	38	19	108	56.2	43.7	9.5	5/8 M16	SA209G	FL209	2
SAFL209-26	1-5/8													SA209-26G		
SAFL209-27	1-11/16													SA209-27G		
SAFL209-28	1-3/4													SA209-28G		
SAFL210		50	197	157	22	18	40	19	115	55.7	43.7	10.0	5/8 M16	SA210G	FL210	2.25
SAFL210-30	1-7/8													SA210-30G		
SAFL210-31	1-15/16													SA210-31G		
SAFL210-32	2S													SA210-32G		
SAFL211		55	224	184	25	20	43	19	130	61.4	48.4	12	5/8 M16	SA211G	FL211	2.80
SAFL211-32	2													SA211-32G		
SAFL211-35	2-3/16													SA211-35G		

ASK FOR NATIONAL QUALITY

Note actual products may differ from photos shown in this brochure.
Product availability and specifications are subject to change without notice.

SBFD200 SERIES
2-BOLT FLANGE
NARROW INNER RACE
 SET SCREW LOCKING



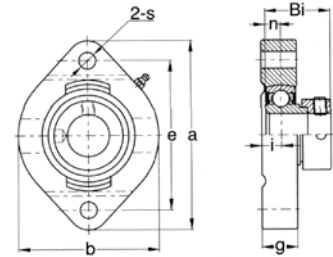
Bearing No.	Shaft Dia.		Dimensions (mm)								Bolt Size	Bearing No.	Housing No.	Weight (kg)
	In.	mm	a	e	i	g	s	b	Bi	n				
SBFD201-08	1/2		81	63.5	8.5	15	7	59	22	6	1/4 M6	SB201-08G	FD203	0.32
SBFD202-10	5/8											SB202-10G		
SBFD204		20	90.5	71.4	9.5	17	9	66.5	25	7	5/16 M8	SB204G	FD204	0.5
SBFD204-12	3/4											SB204-12G		
SBFD205		25	97	76.2	9.5	17.5	9	71	27	7.5	5/16 M8	SB205G	FD205	0.59
SBFD205-14	7/8											SB205-14G		
SBFD205-15	15/16											SB205-15G		
SBFD205-16	1											SB205-16G		
SBFD206		30	112.5	90.5	11.5	20.5	11.5	84	30	8	3/8 M10	SB206G	FD206	0.82
SBFD206-17	1-1/16											SB206-17G		
SBFD206-18	1-1/8											SB206-18G		
SBFD206-19	1-3/16											SB206-19G		
SBFD206-20	1-1/4S											SB206-20G		
SBFD207		35	126	100	12.5	22	11.5	94	32	8.5	3/8 M10	SB207G	FD207	1.0
SBFD207-20	1-1/4											SB207-20G		
SBFD207-21	1-15/16											SB207-21G		
SBFD207-22	1-3/8											SB207-22G		
SBFD207-23	1-7/16											SB207-23G		

BEARING UNITS

ASK FOR NATIONAL QUALITY

Note actual products may differ from photos shown in this brochure.
 Product availability and specifications are subject to change without notice.

SAFD200 SERIES
2-BOLT FLANGE
NARROW INNER RACE
ECCENTRIC LOCKING COLLAR

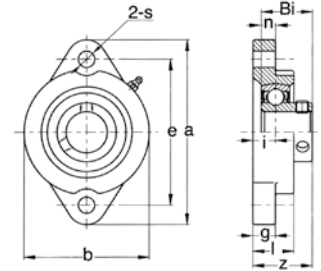


Bearing No.	Shaft Dia.		Dimensions (mm)								Bolt Size	Bearing No.	Housing No.	Weight (kg)
	In.	mm	a	e	i	g	s	b	Bi	n				
SAFD201-08	1/2		81	63.5	8.5	15	7	58.7	28.6	6.0	1/4 M6	SA201-08G	FD203	0.34
SAFD202-10	5/8											SA202-10G		
SAFD204		20	90.5	71.4	9.5	17	9	66.5	31.0	7.0	5/16 M8	SA204G	FD204	0.51
SAFD204-12	3/4											SA204-12G		
SAFD205		25	97	76.2	9.5	17.5	9	71	31.0	7.5	5/16 M8	SA205G	FD205	0.61
SAFD205-14	7/8											SA205-14G		
SAFD205-15	15/16											SA205-15G		
SAFD205-16	1											SA205-16G		
SAFD206		30	112.5	90.5	11.5	20.5	11.5	84	35.7	8.0	3/8 M10	SA206G	FD206	0.85
SAFD206-17	1-1/16											SA206-17G		
SAFD206-18	1-1/8											SA206-18G		
SAFD206-19	1-3/16											SA206-19G		
SAFD206-20	1-1/4S											SA206-20G		
SAFD207		35	126	100	12.5	22	11.5	94	38.9	8.5	3/8 M10	SA207G	FD207	1.10
SAFD207-20	1-1/4											SA207-20G		
SAFD207-21	1-5/16											SA207-21G		
SAFD207-22	1-3/8											SA207-22G		
SAFD207-23	1-7/16											SA207-23G		

ASK FOR NATIONAL QUALITY

Note actual products may differ from photos shown in this brochure.
 Product availability and specifications are subject to change without notice.

SBLF200 SERIES
2-BOLT FLANGE
NARROW INNER RACE
 SET SCREW LOCKING

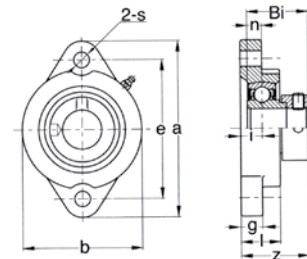


Bearing No.	Shaft Dia.		Dimensions (mm)										Bolt Size	Bearing No.	Housing No.	Weight (kg)
	In.	mm	a	e	i	g	l	s	b	z	Bi	n				
SBLF201-08	1/2		81	63.5	9.5	9.5	18	8	56	25.4	22	6	1/4 M6	SB201-08G	LF203	0.27
SBLF202-10	5/8													SB202-10G		
SBLF204		20	90	71.4	11	11	20	10	61	29	25	7	5/16 M8	SB204G	LF204	0.3
SBLF204-12	3/4													SB204-12G		
SBLF205		25	95	76.0	11	11	20	10	64	31	27	7.5	5/16 M8	SB205G	LF205	0.39
SBLF205-14	7/8													SB205-14G		
SBLF205-15	15/16													SB205-15G		
SBLF205-16	1													SB205-16G		
SBLF206		30	113	90.5	12	12	22	12	76	34	30	8	3/8 M10	SB206G	LF206	0.57
SBLF206-17	1-1/16													SB206-17G		
SBLF206-18	1-1/8													SB206-18G		
SBLF206-19	1-3/16													SB206-19G		
SBLF206-20	1-1/4S													SB206-20G		
SBLF207		35	122	100	13	13	24	12	89	36	32	8.5	3/8 M10	SB207G	LF207	0.77
SBLF207-20	1-1/4													SB207-20G		
SBLF207-21	1-15/16													SB207-21G		
SBLF207-22	1-3/8													SB207-22G		
SBLF207-23	1-7/16													SB207-23G		

ASK FOR NATIONAL QUALITY

Note actual products may differ from photos shown in this brochure.
 Product availability and specifications are subject to change without notice.

SALF200 SERIES
2-BOLT FLANGE
NARROW INNER RACE
 ECCENTRIC LOCKING COLLAR

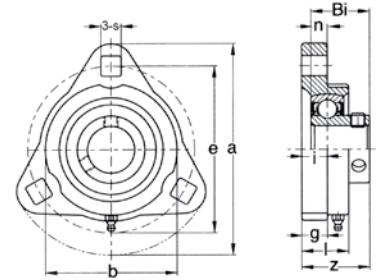


Bearing No.	Shaft Dia.		Dimensions (mm)										Bolt Size	Bearing No.	Housing No.	Weight (kg)
	In.	mm	a	e	i	g	l	s	b	z	Bi	n				
SALF201-08	1/2		81	63.5	9.5	9.5	18	8	56	32.1	28.6	6.0	1/4 M6	SA201-08G	LF203	0.3
SALF202-10	5/8													SA202-10G		
SALF204		20	90	71.4	11	11	20	10	61	35.1	31.0	7.0	5/16 M8	SA204G	LF204	0.3
SALF204-12	3/4													SA204-12G		
SALF205		25	95	76	11	11	20	10	64	34.6	31.0	7.5	5/16 M8	SA205G	LF205	0.4
SALF205-14	7/8													SA205-14G		
SALF205-15	15/16													SA205-15G		
SALF205-16	1													SA205-16G		
SALF206		30	113	90.5	12	12	22	12	76	39.6	35.7	8.0	3/8 M10	SA206G	LF206	0.6
SALF206-17	1-1/16													SA206-17G		
SALF206-18	1-1/8													SA206-18G		
SALF206-19	1-3/16													SA206-19G		
SALF206-20	1-1/4S													SA206-20G		
SALF207		35	122	100	13	13	24	12	89	43.5	38.9	8.5	3/8 M10	SA207G	LF207	0.8
SALF207-20	1-1/4													SA207-20G		
SALF207-21	1-5/16													SA207-21G		
SALF207-22	1-3/8													SA207-22G		
SALF207-23	1-7/16													SA207-23G		

ASK FOR NATIONAL QUALITY

Note actual products may differ from photos shown in this brochure.
 Product availability and specifications are subject to change without notice.

SBFCT200 SERIES 3-BOLT TRIANGULAR FLANGE NARROW INNER RACE SET SCREW LOCKING



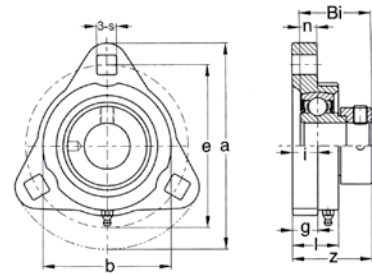
Bearing No.	Shaft Dia.		Dimensions (mm)										Bolt Size	Bearing No.	Housing No.	Weight (kg)
	In.	mm	a	e	i	b	l	g	s	z	Bi	n				
SBFCT201-08	1/2		80.9	63.5	9.1	49	17.5	10.3	7.1	25.7	22	6	1/4 M6	SB201-08G	FCT203	0.25
SBFCT202-10	5/8													SB202-10G		
SBFCT204		20	90.5	71.4	11.1	62	20	11.1	8.7	29.1	25	7	5/16 M8	SB204G	FCT204	0.35
SBFCT204-12	3/4													SB204-12G		
SBFCT205		25	95.3	76.2	11.1	72	20	12.7	8.7	30.6	27	7.5	5/16 M8	SB205G	FCT205	0.45
SBFCT205-14	7/8													SB205-14G		
SBFCT205-15	15/16													SB205-15G		
SBFCT205-16	1													SB205-16G		
SBFCT206		30	115.9	90.5	11.1	84	22	15.1	10.3	33.1	30	8	3/8 M10	SB206G	FCT206	0.62
SBFCT206-17	1-1/16													SB206-17G		
SBFCT206-18	1-1/8													SB206-18G		
SBFCT206-19	1-3/16													SB206-19G		
SBFCT206-20	1-1/4S													SB206-20G		
SBFCT207		35	122.2	100	12.7	90	24	15.1	10.3	36.2	32	8.5	3/8 M10	SB207G	FCT207	0.83
SBFCT207-20	1-1/4													SB207-20G		
SBFCT207-21	1-5/16													SB207-21G		
SBFCT207-22	1-3/8													SB207-22G		
SBFCT207-23	1-7/16													SB207-23G		

BEARING UNITS

ASK FOR NATIONAL QUALITY

Note actual products may differ from photos shown in this brochure.
Product availability and specifications are subject to change without notice.

SAFCT200 SERIES
3-BOLT TRIANGULAR FLANGE
NARROW INNER RACE
 ECCENTRIC LOCKING COLLAR



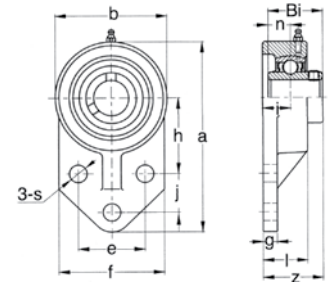
Bearing No.	Shaft Dia.		Dimensions (mm)										Bolt Size	Bearing No.	Housing No.	Weight (kg)
	In.	mm	a	e	i	b	l	g	s	z	Bi	n				
SAFCT201-08	1/2		80.9	63.5	9.7	49	17.5	10.3	7.1	32.3	28.6	6	1/4 M6	SA201-08G	FCT203	0.26
SAFCT202-10	5/8													SA202-10G		
SAFCT204		20	90.5	71.4	11.1	62	20	11.1	8.7	35	31	7	5/16 M8	SA204G	FCT204	0.37
SAFCT204-12	3/4													SA204-12G		
SAFCT205		25	95.3	76.2	11.1	72	20	12.7	8.7	34.6	31	7.5	5/16 M8	SA205G	FCT205	0.48
SAFCT205-14	7/8													SA205-14G		
SAFCT205-15	15/16													SA205-15G		
SAFCT205-16	1													SA205-16G		
SAFCT206		30	115.9	90.5	11.1	84	22	15.1	10.3	38.8	35.7	8	3/8 M10	SA206G	FCT206	0.70
SAFCT206-17	1-1/16													SA206-17G		
SAFCT206-18	1-1/8													SA206-18G		
SAFCT206-19	1-3/16													SA206-19G		
SAFCT206-20	1-1/4S													SA206-20G		
SAFCT207		35	122.2	100	12.7	90	24	15.1	10.3	43.1	38.9	8.5	3/8 M10	SA207G	FCT207	0.91
SAFCT207-20	1-1/4													SA207-20G		
SAFCT207-21	1-5/16													SA207-21G		
SAFCT207-22	1-3/8													SA207-22G		
SAFCT207-23	1-7/16													SA207-23G		

ASK FOR NATIONAL QUALITY

Note actual products may differ from photos shown in this brochure.
 Product availability and specifications are subject to change without notice.



UCFB200 SERIES
3-BOLT FLANGE BRACKET
WIDE INNER RACE
 SET SCREW LOCKING
 AMERICAN STYLE



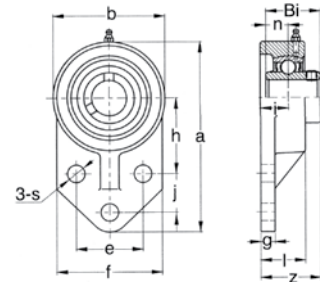
Bearing No.	Shaft Dia.		Dimensions (mm)													Bolt Size	Bearing No.	Housing No.	Weight (kg)
	In.	mm	a	h	e	j	i	g	l	s	b	f	z	Bi	n				
UCFB201-08	1/2		107.9	42.9	38.1	22.2	15.9	8	25.4	10	63.5	60.3	34.1	31	12.7	5/16 M8	UC201-08	FB204	0.7
UCFB202-10	5/8																UC202-10		
UCFB204		20															UC204		
UCFB204-12	3/4																UC204-12		
UCFB205		25	120.7	46	41.3	28.6	16.7	9.6	28.6	10	69.9	63.5	36.5	34	14.3	5/16 M8	UC205	FB205	0.8
UCFB205-14	7/8																UC205-14		
UCFB205-15	15/16																UC205-15		
UCFB205-16	1																UC205-16		
UCFB206		30	136.5	52.4	47.6	31.8	18.7	9.6	31.8	10	82.6	69.9	40.9	38.1	15.9	5/16 M8	UC206	FB206	1
UCFB206-17	1-1/16																UC206-17		
UCFB206-18	1-1/8																UC206-18		
UCFB206-19	1-3/16																UC206-19		
UCFB206-20	1-1/4S																UC206-20		
UCFB207		35	155.6	60.3	50.8	31.8	21	12.7	36.5	13.1	95.3	82.6	46.4	42.9	17.5	3/8 M10	UC207	FB207	1.3
UCFB207-20	1-1/4																UC207-20		
UCFB207-21	1-5/16																UC207-21		
UCFB207-22	1-3/8																UC207-22		
UCFB207-23	1-7/16																UC207-23		
UCFB208		40	164.3	60.3	50	41.3	21	15.9	35.7	13.1	100.9	77.8	51.2	49.2	19	3/8 M10	UC208	FB208	1.4
UCFB208-24	1-1/2																UC208-24		
UCFB208-25	1-9/16																UC208-25		
UCFB209		45	173.9	65.1	53.9	42.9	21.8	18.3	38.1	13.1	107.4	80.2	51.2	49.2	19	3/8 M10	UC209	FB209	2.2
UCFB209-26	1-5/8																UC209-26		
UCFB209-27	1-11/16																UC209-27		
UCFB209-28	1-3/4																UC209-28		
UCFB210		50	190.5	74.6	69.9	41.3	21.8	12.7	38.1	13.1	117.5	101.6	53.6	51.6	19	3/8 M10	UC210	FB210	2.5
UCFB210-30	1-7/8																UC210-30		
UCFB210-31	1-15/16																UC210-31		
UCFB210-32	2S																UC210-32		

BEARING UNITS

ASK FOR NATIONAL QUALITY

Note actual products may differ from photos shown in this brochure.
 Product availability and specifications are subject to change without notice.

UCFK200 SERIES
3-BOLT FLANGE BRACKET
WIDE INNER RACE
 SET SCREW LOCKING
 EUROPEAN STYLE



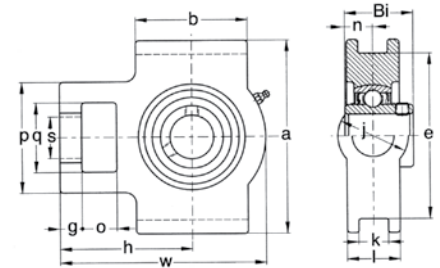
Bearing No.	Shaft Dia.		Dimensions (mm)													Bolt Size	Bearing No.	Housing No.	Weight (kg)
	In.	mm	a	h	e	j	i	g	l	s	b	f	z	Bi	n				
UCFK201-08	1/2		110	42	32	27	15	13	25.5	10	62	52	33.3	31	12.7	5/16 M8	UC201-08	FK204	0.60
UCFK202-10	5/8																UC202-10		
UCFK204		20															UC204		
UCFK204-12	3/4																UC204-12		
UCFK205		25	116	45	34	27	16	13	27	10	68	56	35.7	34	14.3	5/16 M8	UC205	FK205	0.66
UCFK205-14	7/8																UC205-14		
UCFK205-15	15/16																UC205-15		
UCFK205-16	1																UC205-16		
UCFK206		30	130	50	40	29	18	13	31	10	78	65	40.2	38.1	15.9	5/16 M8	UC206	FK206	0.93
UCFK206-17	1-1/16																UC206-17		
UCFK206-18	1-1/8																UC206-18		
UCFK206-19	1-3/16																UC206-19		
UCFK206-20	1-1/4S																UC206-20		
UCFK207		35															144		
UCFK207-20	1-1/4		UC207-20																
UCFK207-21	1-5/16		UC207-21																
UCFK207-22	1-3/8		UC207-22																
UCFK207-23	1-7/16		UC207-23																
UCFK208		40	164	60	50	41	21	16	36	12	100	78	51.2	49.2	19	3/8 M10	UC208	FK208	1.7
UCFK208-24	1-1/2																UC208-24		
UCFK208-25	1-9/16																UC208-25		
UCFK209		45	174	65	54	43	22	18	38	12	106	80	52.2	49.2	19	3/8 M10	UC209	FK209	1.9
UCFK209-26	1-5/8																UC209-26		
UCFK209-27	1-11/16																UC209-27		
UCFK209-28	1-3/4																UC209-28		
UCFK210		50	184	68	58	46	22	18	40	12	112	86	54.6	51.6	19	3/8 M10	UC210	FK210	2.2
UCFK210-30	1-7/8																UC210-30		
UCFK210-31	1-15/16																UC210-31		
UCFK210-32	2S																UC210-32		

ASK FOR NATIONAL QUALITY

Note actual products may differ from photos shown in this brochure.
 Product availability and specifications are subject to change without notice.



UCST200 SERIES
TAKE-UP UNITS - WIDE SLOT
WIDE INNER RACE
 SET SCREW LOCKING



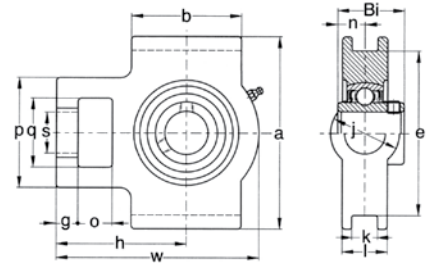
Bearing No.	Shaft Dia.		Dimensions (mm)														Bearing No.	Housing No.	Weight (kg)			
	In.	mm	o	g	p	q	s	b	k	e	a	w	l	j	h	Bi				n		
UCST201-08	1/2																	UC201-08				
UCST202-10	5/8		16	10	51	32	19	51	13.5	76.2	89	94	24	32	60	31	12.7	UC202-10	ST204	0.77		
UCST204		20																UC204				
UCST204-12	3/4																	UC204-12				
UCST205		25																UC205	ST205	0.86		
UCST205-14	7/8		16	10	51	32	22	51	13.5	76.2	89	97	24	32	62	34	14.3	UC205-14				
UCST205-15	15/16																	UC205-15				
UCST205-16	1																	UC205-16				
UCST206		30																UC206	ST206	1.32		
UCST206-17	1-1/16		16	10	56	37	22	57	13.5	89	102	113	24	37	70	38.1	15.9	UC206-17				
UCST206-18	1-1/8																	UC206-18				
UCST206-19	1-3/8																	UC206-19				
UCST206-20	1-1/4S																	UC206-20				
UCST207		35																UC207	ST207	1.59		
UCST207-20	1-1/4		16	13	64	37	22	64	13.5	89	102	129	30	37	78	42.9	17.5	UC207-20				
UCST207-21	1-5/16																	UC207-21				
UCST207-22	1-3/8																	UC207-22				
UCST207-23	1-7/16																	UC207-23				
UCST208		40																UC208	ST208	2.3		
UCST208-24	1-1/2		19	16	83	49	29	83	17.5	102	114	144	35	49	89	49.2	19	UC208-24				
UCST208-25	1-9/16																	UC208-25				
UCST209		45																UC209	ST209	2.5		
UCST209-26	1-5/8		19	16	83	49	29	83	17.5	102	117	145	35	49	87	49.2	19	UC209-26				
UCST209-27	1-11/16																	UC209-27				
UCST209-28	1-3/4																	UC209-28				
UCST210		50																UC210	ST210	2.6		
UCST210-30	1-7/8		19	16	83	49	29	86	17.5	102	117	151	35	49	90	51.6	19	UC210-30				
UCST210-31	1-15/16																	UC210-31				
UCST210-32	2S																	UC210-32				
UCST211		55																UC211	ST211	4.1		
UCST211-32	2		25	19	102	64	35	95	27	130	146	171	41	64	106	55.6	22.2	UC211-32				
UCST211-34	2-1/8																	UC211-34				
UCST211-35	2-3/16																	UC211-35				
UCST212		60																UC212	ST212	4.8		
UCST212-36	2-1/4		32	19	102	64	35	102	27	130	146	194	46	64	119	65.1	25.4	UC212-36				
UCST212-38	2-3/8																	UC212-38				
UCST212-39	2-7/16																	UC212-39				
UCST213		65																UC213	ST213	6.8		
UCST213-40	2-1/2		32	21	111	70	41	121	27	151	167	224	51	70	137	65.1	25.4	UC213-40				
UCST214		70																UC214	ST214	7		
UCST214-43	2-11/16		32	21	111	70	41	121	27	151	167	224	46	70	137	74.6	30.2	UC214-43				
UCST214-44	2-3/4																	UC214-44				
UCST215		75																UC215	ST215	7.8		
UCST215-47	2-15/16		32	21	111	70	41	121	27	151	167	232	48	70	140	77.8	33.3	UC215-47				
UCST215-48	3																	UC215-48				

BEARING UNITS

ASK FOR NATIONAL QUALITY

Note actual products may differ from photos shown in this brochure.
 Product availability and specifications are subject to change without notice.

UCT200 SERIES
TAKE-UP UNITS - NARROW SLOT
WIDE INNER RACE
 SET SCREW LOCKING

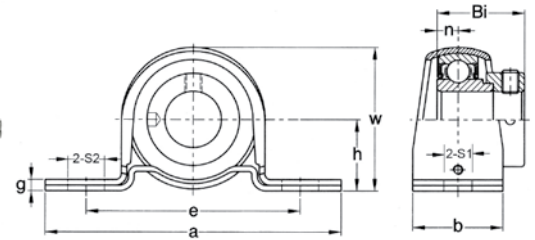


Bearing No.	Shaft Dia.		Dimensions (mm)														Bearing No.	Housing No.	Weight (kg)	
	In.	mm	o	g	p	q	s	b	k	e	a	w	l	j	h	Bi				n
UCT201-08	1/2		16	10	51	32	19	51	12	76.2	89	94	21	32	61	31	12.7	UC201-08	T204	0.77
UCT202-10	5/8																	UC202-10		
UCT204		20																UC204		
UCT204-12	3/4																	UC204-12		
UCT205		25	16	10	51	32	19	51	12	76.2	89	97	24	32	62	34	14.3	UC205	T205	0.86
UCT205-14	7/8																	UC205-14		
UCT205-15	15/16																	UC205-15		
UCT205-16	1																	UC205-16		
UCT206		30	16	10	56	37	22	57	12	89	102	113	28	37	70	38.1	15.9	UC206	T206	1.32
UCT206-17	1-1/16																	UC206-17		
UCT206-18	1-1/8																	UC206-18		
UCT206-19	1-3/8																	UC206-19		
UCT206-20	1-1/4S		UC206-20																	
UCT207		35	16	13	64	37	22	64	12	89	102	129	30	37	78	42.9	17.5	UC207	T207	1.59
UCT207-20	1-1/4																	UC207-20		
UCT207-21	1-5/16																	UC207-21		
UCT207-22	1-3/8																	UC207-22		
UCT207-23	1-7/16		UC207-23																	
UCT208		40	19	16	83	49	29	83	16	102	114	144	33	49	88	49.2	19	UC208	T208	2.30
UCT208-24	1-1/2																	UC208-24		
UCT208-25	1-9/16																	UC208-25		
UCT209		45																UC209		
UCT209-26	1-5/8		19	16	83	49	29	83	16	102	117	145	35	49	88	49.2	19	UC209-26	T209	2.50
UCT209-27	1-11/16																	UC209-27		
UCT209-28	1-3/4																	UC209-28		
UCT210		50																UC210		
UCT210-30	1-7/8		19	16	83	49	29	86	16	102	117	151	37	49	92	51.6	19	UC210-30	T210	2.60
UCT210-31	1-15/16																	UC210-31		
UCT210-32	2S																	UC210-32		
UCT211		55																UC211		
UCT211-32	2		25	19	102	64	35	95	22	130	146	171	38	64	106	55.6	22.2	UC211-32	T211	4.10
UCT211-34	2-1/8																	UC211-34		
UCT211-35	2-3/16																	UC211-35		
UCT212		60																UC212		
UCT212-36	2-1/4		32	19	102	64	35	102	22	130	146	194	42	64	119	65.1	25.4	UC212-36	T212	4.80
UCT212-38	2-3/8																	UC212-38		
UCT212-39	2-7/16																	UC212-39		
UCT213		65																UC213		
UCT213-40	2-1/2		32	21	111	70	41	121	26	151	167	224	44	70	137	65.1	25.4	UC213-40	T213	6.80
UCT214		70																UC214		
UCT214-43	2-11/16																	UC214-43		
UCT214-44	2-3/4																	UC214-44		
UCT215		75	32	21	111	70	41	121	26	151	167	232	46	70	140	77.8	33.3	UC215	T215	7.80
UCT215-47	2-15/16																	UC215-47		
UCT215-48	3																	UC215-48		

ASK FOR NATIONAL QUALITY

Note actual products may differ from photos shown in this brochure.
 Product availability and specifications are subject to change without notice.

SBPP200 SERIES
PRESSED STEEL PILLOW BLOCKS
NARROW INNER RACE
 SET SCREW LOCKING

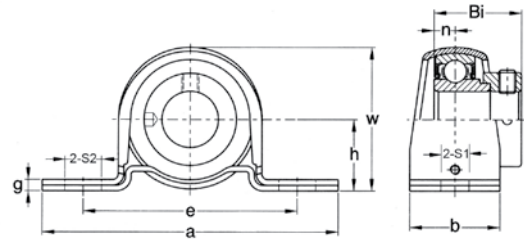


Bearing No.	Shaft Dia.		Dimensions (mm)										Bolt Size	Bearing No.	Housing No.	Weight (kg)
	In.	mm	h	a	e	b	S1	S2	w	g	Bi	n				
SBPP201-08	1/2		22.2	86	68	25	9	13	44	3.2	22	6.0	5/16 M8	SB201-8	PP203	0.17
SBPP202-10	5/8													SB202-10		
SBPP204		20	25.4	98	76	32	10	13	50	3.2	25	7.0	5/16 M8	SB204	PP204	0.22
SBPP204-12	3/4													SB204-12		
SBPP205		25	28.6	108	86	32	10	14	56	4	27	7.5	3/8 M10	SB205	PP205	0.31
SBPP205-14	7/8													SB205-14		
SBPP205-15	15/16													SB205-15		
SBPP205-16	1													SB205-16		
SBPP206		30	33.3	117	95	38	10	14	66	4	30	8.0	3/8 M10	SB206	PP206	0.47
SBPP206-17	1-1/16													SB206-17		
SBPP206-18	1-1/8													SB206-18		
SBPP206-19	1-3/16													SB206-19		
SBPP206-20	1-1/4S													SB206-20		
SBPP207		35	39.7	129	106	42	13	19	78	4.6	32	8.5	3/8 M10	SB207	PP207	0.73
SBPP207-20	1-1/4													SB207-20		
SBPP207-21	1-5/16													SB207-21		
SBPP207-22	1-3/8													SB207-22		
SBPP207-23	1-7/16													SB207-23		

ASK FOR NATIONAL QUALITY

Note actual products may differ from photos shown in this brochure.
 Product availability and specifications are subject to change without notice.

SAPP200 SERIES PRESSED STEEL PILLOW BLOCKS NARROW INNER RACE ECCENTRIC LOCKING COLLAR



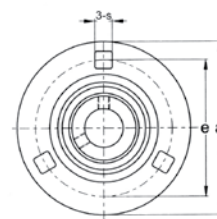
Bearing No.	Shaft Dia.		Dimensions (mm)										Bolt Size	Bearing No.	Housing No.	Weight (kg)
	In.	mm	h	a	e	b	S1	S2	w	g	Bi	n				
SAPP201-8	1/2		22.2	86	68	25	9	13	44	3.2	28.6	6.0	5/16 M8	SA201-8	PP203	0.20
SAPP202-10	5/8													SA202-10		
SAPP204		20	25.4	98	76	32	10	13	50	3.2	31.0	7.0	5/16 M8	SA204	PP204	0.24
SAPP204-12	3/4													SA204-12		
SAPP205		25	28.6	108	86	32	10	14	56	4	31.0	7.5	3/8 M10	SA205	PP205	0.33
SAPP205-14	7/8													SA205-14		
SAPP205-15	15/16													SA205-15		
SAPP205-16	1													SA205-16		
SAPP206		30	33.3	117	95	38	10	14	66	4	35.7	8.0	3/8 M10	SA206	PP206	0.50
SAPP206-17	1-1/16													SA206-17		
SAPP206-18	1-1/8													SA206-18		
SAPP206-19	1-3/16													SA206-19		
SAPP206-20	1-1/4S													SA206-20		
SAPP207		35	39.7	129	106	42	13	19	78	4.6	38.9	8.5	3/8 M10	SA207	PP207	0.75
SAPP207-20	1-1/4													SA207-20		
SAPP207-21	1-5/16													SA207-21		
SAPP207-22	1-3/8													SA207-22		
SAPP207-23	1-7/16													SA207-23		

ASK FOR NATIONAL QUALITY

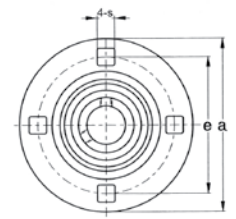
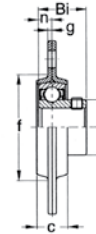
Note actual products may differ from photos shown in this brochure.
Product availability and specifications are subject to change without notice.



SBPF200 SERIES
ROUND FLANGETTES
NARROW INNER RACE
 SET SCREW LOCKING



PF203-PF207



PF208

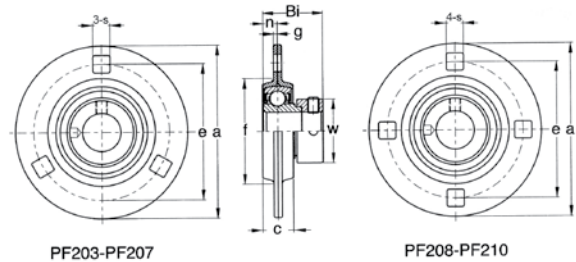
Bearing No.	Shaft Dia.		Dimensions (mm)								Bolt Size	Bearing No.	Housing No.	Weight (kg)
	In.	mm	a	e	g	c	s	f	Bi	n				
SBPF201-8	1/2		81	64	2	14	7	49	22	6.0	1/4 M6	SB201-8	PF203	0.30
SBPF202-10	5/8											SB202-10		
SBPF204		20	90	71	2.1	16	9	56	25	7.0	5/16 M8	SB204	PF204	0.33
SBPF204-12	3/4											SB204-12		
SBPF205		25	95	76	2.1	17	9	66	27	7.5	5/16 M8	SB205	PF205	0.38
SBPF205-14	7/8											SB205-14		
SBPF205-15	15/16											SB205-15		
SBPF205-16	1											SB205-16		
SBPF206		30	113	90	2.6	17	11	71	30	8.0	3/8 M10	SB206	PF206	0.64
SBPF206-17	1-1/16											SB206-17		
SBPF206-18	1-1/8											SB206-18		
SBPF206-19	1-3/16											SB206-19		
SBPF206-20	1-1/4S											SB206-20		
SBPF207		35	122	100	2.6	19	11	81	32	8.5	3/8 M10	SB207	PF207	0.82
SBPF207-20	1-1/4											SB207-20		
SBPF207-21	1-5/16											SB207-21		
SBPF207-22	1-3/8											SB207-22		
SBPF207-23	1-7/16											SB207-23		
SBPF208		40	148	119	3.4	21	13	90	34	9.0	1/2 M14	SB208	PF208	1
SBPF208-24	1-1/2											SB208-24		
SBPF208-25	1-9/16											SB208-25		

BEARING UNITS

ASK FOR NATIONAL QUALITY

Note actual products may differ from photos shown in this brochure.
 Product availability and specifications are subject to change without notice.

SAPF200 SERIES ROUND FLANGETTES NARROW INNER RACE ECCENTRIC LOCKING COLLAR



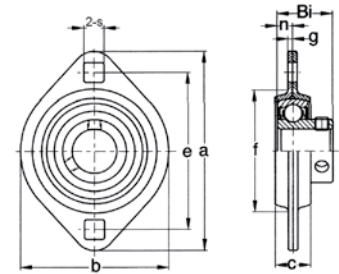
Bearing No.	Shaft Dia.		Dimensions (mm)									Bolt Size	Bearing No.	Housing No.	Weight (kg)
	In.	mm	a	e	g	c	s	f	Bi	n	w				
SAPF201-8	1/2		81	64	2	14	7	49	28.6	6	28.6	1/4 M6	SA201-8	PF203	0.31
SAPF202-10	5/8												SA202-10		
SAPF204		20	90	71	2	16	9	56	31.0	7.0	32.0	5/16 M8	SA204	PF204	0.35
SAPF204-12	3/4												SA204-12		
SAPF205		25	95	76	2	18	9	66	31.0	7.5	38.1	5/16 M8	SA205	PF205	0.40
SAPF205-14	7/8												SA205-14		
SAPF205-15	15/16												SA205-15		
SAPF205-16	1												SA205-16		
SAPF206		30	113	90	2.6	18	11	71	35.7	8.0	44.5	3/8 M10	SA206	PF206	0.68
SAPF206-17	1-1/16												SA206-17		
SAPF206-18	1-1/8												SA206-18		
SAPF206-19	1-3/16												SA206-19		
SAPF206-20	1-1/4S												SA206-20		
SAPF207		35	122	100	2.6	20	11	81	38.9	8.5	56.6	3/8 M10	SA207	PF207	0.84
SAPF207-20	1-1/4												SA207-20		
SAPF207-21	1-5/16												SA207-21		
SAPF207-22	1-3/8												SA207-22		
SAPF207-23	1-7/16												SA207-23		
SAPF208		40	148	119	3.4	21	13	90	43.7	9.0	60.4	1/2 M14	SA208	PF208	1.3
SAPF208-24	1-1/2												SA208-24		
SAPF208-25	1-9/16												SA208-25		
SAPF209		45	149	121	3.4	22	13	97	43.7	9.5	63.5	1/2 M14	SA209	PF209	1.7
SAPF209-26	1-5/8												SA209-26		
SAPF209-27	1-11/16												SA209-27		
SAPF209-28	1-3/4												SA209-28		
SAPF210		50	156	127	3.8	22	13	102	43.7	10.0	69.9	1/2 M14	SA210	PF210	2.0
SAPF210-30	1-7/8												SA210-30		
SAPF210-31	1-15/16												SA210-31		
SAPF210-32	2S												SA210-32		

ASK FOR NATIONAL QUALITY

Note actual products may differ from photos shown in this brochure.
Product availability and specifications are subject to change without notice.



SBPFL200 SERIES
2-BOLT FLANGETTES
NARROW INNER RACE
 SET SCREW LOCKING

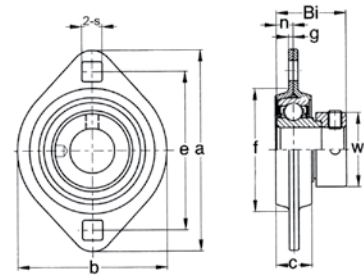


Bearing No.	Shaft Dia.		Dimensions (mm)									Bolt Size	Bearing No.	Housing No.	Weight (kg)
	In.	mm	a	e	g	c	s	b	f	Bi	n				
SBPFL201-8	1/2		81	63	1.9	14	7	59	49	22	6.0	1/4 M6	SB201-8	PFL203	0.19
SBPFL202-10	5/8												SB202-10		
SBPFL204		20	90	71	2.1	16	9	67	56	25	7.0	5/16 M8	SB204	PFL204	0.24
SBPFL204-12	3/4												SB204-12		
SBPFL205		25	95	76	2.1	18	9	71	60	27	7.5	5/16 M8	SB205	PFL205	0.28
SBPFL205-14	7/8												SB205-14		
SBPFL205-15	15/16												SB205-15		
SBPFL205-16	1												SB205-16		
SBPFL206		30	113	90	2.6	18	11	84	71	30	8.0	3/8 M10	SB206	PFL206	0.38
SBPFL206-17	1-1/16												SB206-17		
SBPFL206-18	1-1/8												SB206-18		
SBPFL206-19	1-3/16												SB206-19		
SBPFL206-20	1-1/4S												SB206-20		
SBPFL207		35	122	100	2.6	20	11	94	81	32	8.5	3/8 M10	SB207	PFL207	0.45
SBPFL207-20	1-1/4												SB207-20		
SBPFL207-21	1-5/16												SB207-21		
SBPFL207-22	1-3/8												SB207-22		
SBPFL207-23	1-7/16												SB207-23		

ASK FOR NATIONAL QUALITY

Note actual products may differ from photos shown in this brochure.
 Product availability and specifications are subject to change without notice.

SAPFL200 SERIES 2-BOLT FLANGETTES NARROW INNER RACE ECCENTRIC LOCKING COLLAR



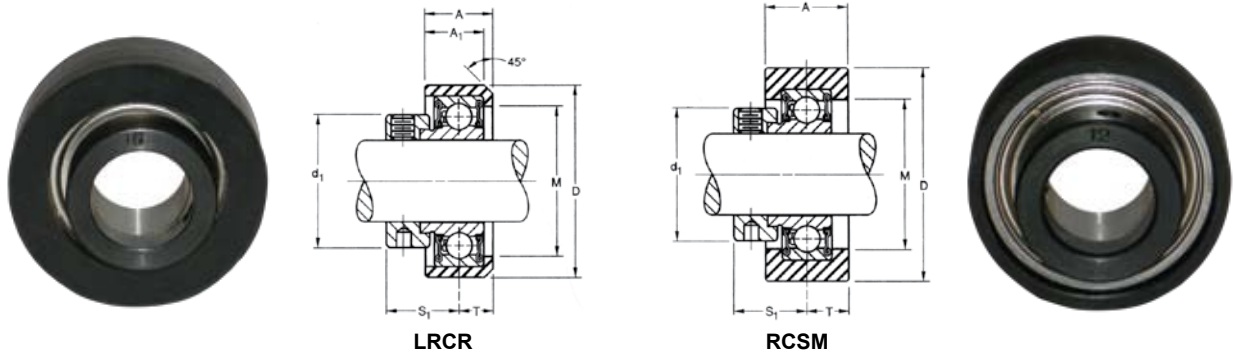
Bearing No.	Shaft Dia.		Dimensions (mm)										Bolt Size	Bearing No.	Housing No.	Weight (kg)	
	In.	mm	a	e	g	c	s	b	f	Bi	n	w					
SAPFL201-8	1/2		81	63	2	14	7	59	49	28.6	6.0	28.6	1/4	SA201-8	PFL203	0.2	
SAPFL202-10	5/8												5/16	SA202-10			
SAPFL204		20	90	71	2	16	9	67	56	31.0	7.0	32.0	5/16	SA204	PFL204	0.3	
SAPFL204-12	3/4												M8	SA204-12			
SAPFL205		25	95	76	2	18	9	71	60	31.0	7.5	38.1	5/16	SA205	PFL205	0.3	
SAPFL205-14	7/8													M8			SA205-14
SAPFL205-15	15/16													SA205-15			
SAPFL205-16	1													SA205-16			
SAPFL206		30	113	90	2.6	18	11	84	71	35.7	8.0	44.5	3/8	SA206	PFL206	0.5	
SAPFL206-17	1-1/16													M10			SA206-17
SAPFL206-18	1-1/8													SA206-18			
SAPFL206-19	1-3/16													SA206-19			
SAPFL206-20	1-1/4S													SA206-S0			
SAPFL207		35	122	100	2.6	20	11	94	81	38.9	8.5	55.6	3/8	SA207	PFL207	0.7	
SAPFL207-20	1-1/4													M10			SA207-20
SAPFL207-21	1-5/16													SA207-21			
SAPFL207-22	1-3/8													SA207-22			
SAPFL207-23	1-7/16													SA207-23			

ASK FOR NATIONAL QUALITY

Note actual products may differ from photos shown in this brochure.
Product availability and specifications are subject to change without notice.



RUBBER CARTRIDGES ECCENTRIC LOCKING COLLAR

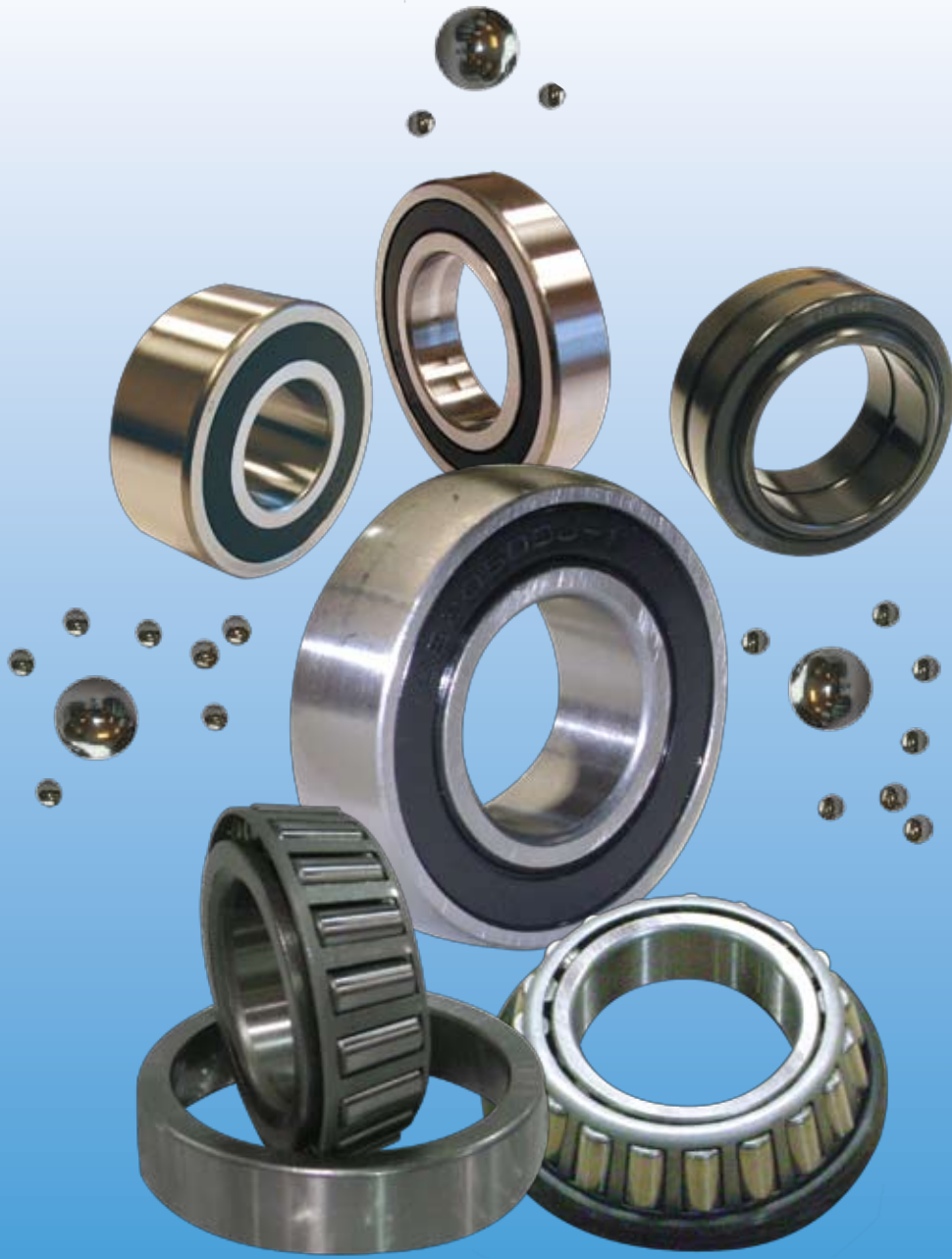


Bearing No.	Shaft Dia.		Dimensions (mm)						Bearing No.	Rubber No.	Housing Radial Load Ratings (N)	Weight (kg)
	In.	D	A	A1	M	d1	S1	T				
LRCR-12	3/4	46	18.3	15.9	34.9	30.2	18.7	9.9	SAA104-12	RCR42/46	880	0.272
RCSM-16	1	64.3	25.4		45.2	38.1	23.4	12.7	SAA205-16	RCSM52/65	1 340	0.527

ASK FOR NATIONAL QUALITY

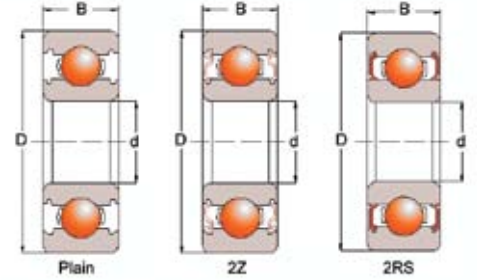
Note actual products may differ from photos shown in this brochure.
Product availability and specifications are subject to change without notice.

BALL AND ROLLER BEARINGS





R SERIES BALL BEARINGS



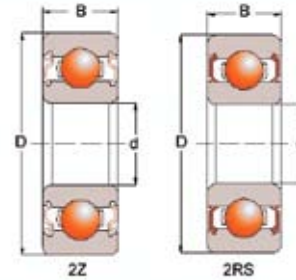
Bearing No.	d Bore		D O.D.		B Width		Basic Load Ratings (N)	
	mm	Inch	mm	Inch	mm	Inch	Dynamic	Static
R2 2Z	3.175	1/8	9.525	3/8	3.9200	0.1543	631	219
R166 2Z	4.763	3/16	12.700	3/8	0.1252	3.1800	709	272
R3	4.763	3/16	12.700	1/2	3.9700	0.1563	1 301	488
R3 2RS	4.763	3/16	12.700	1/2	4.9810	0.1961	1 301	488
R3 2Z	4.763	3/16	12.700	1/2	4.9810	0.1961	1 301	488
R4	6.350	1/4	15.875	5/8	4.9810	0.1961	1 480	621
R4 2RS	6.350	1/4	15.875	5/8	4.9810	0.1961	1 480	621
R4 2Z	6.350	1/4	15.875	5/8	4.9810	0.1961	1 480	621
R4A 2RS	6.350	1/4	19.050	3/4	7.1400	0.2811	2 336	896
R4A 2Z	6.350	1/4	19.050	3/4	7.1400	0.2811	2 336	896
R188 2Z	6.350	1/4	12.700	1/2	4.7600	0.1874	1 082	442
R6	9.525	3/8	22.225	7/8	5.5600	0.2188	3 332	1 422
R6 2RS	9.525	3/8	22.225	7/8	7.1400	0.2811	3 332	1 422
R6 2Z	9.525	3/8	22.225	7/8	7.1400	0.2811	3 332	1 422
R8	12.700	1/2	28.575	1-1/8	6.3500	0.2500	5 108	2 415
R8 2RS	12.700	1/2	28.575	1-1/8	7.9400	0.3126	5 108	2 415
R8 2Z	12.700	1/2	28.575	1-1/8	7.9400	0.3126	5 108	2 415
R10	15.875	5/8	34.925	1-3/8	5.5400	0.2181	5 988	3 287
R10 2RS	15.875	5/8	34.925	1-3/8	8.7300	0.3438	5 988	3 287
R10 2Z	15.875	5/8	34.925	1-3/8	8.7300	0.3438	5 988	3 287
R12	19.500	3/4	41.275	1-5/8	7.9400	0.3126	7 250	4 450
R12 2RS	19.500	3/4	41.275	1-5/8	11.1100	0.4375	7 250	4 450
R12 2Z	19.500	3/4	41.275	1-5/8	11.1100	0.4375	7 250	4 450
R14	22.225	7/8	47.625	1-7/8	9.5250	0.3750	7 750	4 950
R14 2RS	22.225	7/8	47.625	1-7/8	12.7000	0.5000	7 750	4 950
R14 2Z	22.225	7/8	47.625	1-7/8	12.7000	0.5000	7 750	4 950
R16	25.400	1	50.800	2	9.5250	0.3750	8 250	5 450
R16 2RS	25.400	1	50.800	2	12.7000	0.5000	8 250	5 450
R16 2Z	25.400	1	50.800	2	12.7000	0.5000	8 250	5 450
R18	28.575	1-1/8	53.975	2-1/8	9.5250	0.3750	9 600	6 260
R18 2RS	28.575	1-1/8	53.975	2-1/8	12.7000	0.5000	9 600	6 260
R18 2Z	28.575	1-1/8	53.975	2-1/8	12.7000	0.5000	9 600	6 260
R20	31.750	1-1/4	57.150	2-1/4	9.5250	0.3750	10 800	7 520
R20 2RS	31.750	1-1/4	57.150	2-1/4	12.7000	0.5000	10 800	7 520
R20 2Z	31.750	1-1/4	57.150	2-1/4	12.7000	0.5000	10 800	7 520
R22 2RS	34.925	1-3/8	63.500	2-1/2	14.2875	0.5625	12 280	8 500
R22 2Z	34.925	1-3/8	63.500	2-1/2	14.2875	0.5625	12 280	8 500
R24	38.100	1-1/2	66.675	2-5/8	11.1100	0.4374	16 800	11 400
R24 2RS	38.100	1-1/2	66.675	2-5/8	14.2875	0.5625	16 800	11 400
R24 2Z	38.100	1-1/2	66.675	2-5/8	14.2875	0.5625	16 800	11 400

BALL BEARINGS

ASK FOR NATIONAL QUALITY

Note actual products may differ from photos shown in this brochure.
Product availability and specifications are subject to change without notice.

1600 SERIES BALL BEARINGS

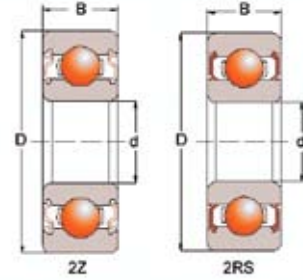


Bearing No.	d Bore		D O.D.		B Width		Basic Load Ratings (N)	
	mm	Inch	mm	Inch	mm	Inch	Dynamic	Static
1601 2RS	4.762	3/16	17.462	11/16	7.938	5/16	1 510	720
1601 2Z	4.762	3/16	17.462	11/16	6.350	1/4	1 510	720
1602 2RS	6.350	1/4	17.462	11/16	7.938	5/16	1 510	720
1602 2Z	6.350	1/4	17.462	11/16	6.350	1/4	1 510	720
1603 2RS	7.938	5/16	22.225	7/8	8.737	11/32	2 540	1 340
1603 2Z	7.938	5/16	22.225	7/8	7.144	9/32	2 540	1 340
1604 2RS	9.525	3/8	22.225	7/8	8.737	11/32	2 540	1 340
1604 2Z	9.525	3/8	22.225	7/8	7.144	9/32	2 540	1 340
1605 2RS	7.938	5/16	23.019	29/32	7.938	5/16	2 540	1 340
1606 2RS	9.525	3/8	23.019	29/32	7.938	5/16	2 540	1 340
1606 2Z	9.525	3/8	23.019	29/32	7.938	5/16	2 540	1 340
1607 2RS	11.112	7/16	23.019	29/32	7.938	5/16	3 550	1 930
1607 2Z	11.112	7/16	23.019	29/32	7.938	5/16	3 550	1 930
1614 2RS	9.525	3/8	28.575	1-1/8	9.525	3/8	3 920	2 240
1614 2Z	9.525	3/8	28.575	1-1/8	9.525	3/8	3 920	2 240
1615 2RS	11.112	7/16	28.575	1-1/8	9.525	3/8	3 920	2 240
1616 2RS	12.700	1/2	28.575	1-1/8	9.525	3/8	3 920	2 240
1616 2Z	12.700	1/2	28.575	1-1/8	9.525	3/8	3 920	2 240
1620 2RS	11.112	7/16	34.925	1-3/8	11.112	7/16	5 880	3 470
1621 2RS	12.700	1/2	34.925	1-3/8	11.112	7/16	5 880	3 470
1621 2Z	12.700	1/2	34.925	1-3/8	11.112	7/16	5 880	3 470
1622 2RS	14.288	9/16	34.925	1-3/8	11.112	7/16	5 880	3 470
1623 2RS	15.875	5/8	34.925	1-3/8	11.112	7/16	5 880	3 470
1623 2Z	15.875	5/8	34.925	1-3/8	11.112	7/16	5 880	3 470
1628 2RS	15.875	5/8	41.275	1-5/8	12.700	1/2	7 230	4 440
1628 2Z	15.875	5/8	41.275	1-5/8	12.700	1/2	7 230	4 440
1630 2RS	19.050	3/4	41.275	1-5/8	12.700	1/2	7 230	4 440
1630 2Z	19.050	3/4	41.275	1-5/8	12.700	1/2	7 230	4 440
1633 2RS	15.875	5/8	44.450	1-3/4	12.700	1/2	7 230	4 440
1633 2Z	15.875	5/8	44.450	1-3/4	12.700	1/2	7 230	4 440
1635 2RS	19.050	3/4	44.450	1-3/4	12.700	1/2	7 230	4 440
1635 2Z	19.050	3/4	44.450	1-3/4	12.700	1/2	7 230	4 440
1638 2RS	19.050	3/4	50.800	2	14.288	9/16	10 780	6 940
1638 2Z	19.050	3/4	50.800	2	14.288	9/16	10 780	6 940
1640 2RS	22.225	7/8	50.800	2	14.288	9/16	10 780	6 940
1641 2RS	25.400	1	50.800	2	14.288	9/16	10 780	6 940
1641 2Z	25.400	1	50.800	2	14.288	9/16	10 780	6 940
1652 2RS	28.575	1-1/8	63.500	2-1/2	15.875	5/8	12 280	8 500
1654 2RS	31.750	1-1/4	63.500	2-1/2	15.875	5/8	12 280	8 500
1654 2Z	31.750	1-1/4	63.500	2-1/2	15.875	5/8	12 280	8 500
R24 2Z	38.100	1-1/2	66.675	2-5/8	14.2875	0.5625	16 800	11 400

ASK FOR NATIONAL QUALITY

Note actual products may differ from photos shown in this brochure.
Product availability and specifications are subject to change without notice.

600 SERIES BALL BEARINGS

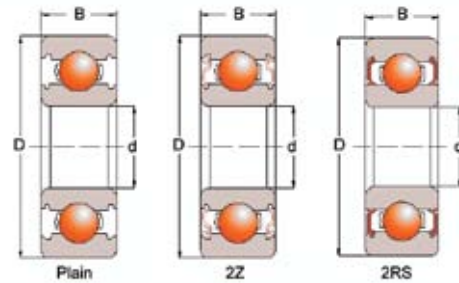


Bearing No.	d Bore	D O.D.	B Width	Basic Load Ratings (N)		Limiting Speeds (RPM)	
	mm	mm	mm	Dynamic	Static	Grease	Oil
623 2RS	3	10	4	640	220	50 000	60 000
623 2Z	3	10	4	640	220	50 000	60 000
684 2Z	4	9	4	641	227	53 000	63 000
624 2RS	4	13	5	1 290	490	40 000	48 000
624 2Z	4	13	5	1 290	490	40 000	48 000
634 2Z	4	16	5	1 340	523	36 000	43 000
685 2RS	5	11	4	716	282	45 000	53 000
685 2Z	5	11	4	716	282	45 000	53 000
695 2RS	5	13	4	1 077	432	43 000	50 000
695 2Z	5	13	4	1 077	432	43 000	50 000
625 2RS	5	16	5	1 729	675	36 000	43 000
625 2Z	5	16	5	1 729	675	36 000	43 000
635 2Z	5	19	6	2 336	896	32 000	40 000
686 2Z	6	13	5	1 082	442	40 000	50 000
696 2Z	6	15	5	1 340	523	40 000	45 000
606 2Z	6	17	6	2 263	846	38 000	45 000
626 2RS	6	19	6	2 336	896	32 000	40 000
626 2Z	6	19	6	2 336	896	32 000	40 000
697 2RS	7	17	5	1 605	719	36 000	43 000
697 2Z	7	17	5	1 605	719	36 000	43 000
607 2RS	7	19	6	2 336	896	36 000	43 000
607 2Z	7	19	6	2 336	896	36 000	43 000
627 2RS	7	22	7	3 287	1 379	30 000	36 000
627 2Z	7	22	7	3 287	1 379	30 000	36 000
688 2RS	8	16	5	1 252	592	36 000	43 000
688 2Z	8	16	5	1 252	592	36 000	43 000
698 2Z	8	19	6	2 237	917	36 000	43 000
608 2RS	8	22	7	3 293	1 379	34 000	40 000
608 2Z	8	22	7	3 293	1 379	34 000	40 000
628 2RS	8	24	8	3 333	1 423	28 000	34 000
628 2Z	8	24	8	3 333	1 423	28 000	34 000
689 2Z	9	4	5	1 315	544	36 000	43 000
609 2RS	9	24	7	3 356	1 444	32 000	38 000
629 2RS	9	26	9	4 575	1 983	28 000	34 000
629 2Z	9	26	9	4 575	1 983	28 000	34 000

ASK FOR NATIONAL QUALITY

Note actual products may differ from photos shown in this brochure.
Product availability and specifications are subject to change without notice.

16000, 6800, 6900, 6000, 6200, 6300 SERIES BALL BEARINGS



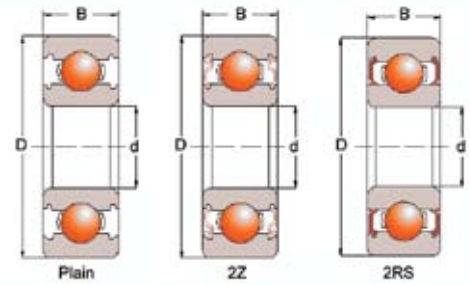
Bearing No.	d	D	B	Basic Load Ratings (N)		Limiting Speeds (RPM)	
	mm	mm	mm	Dynamic	Static	Grease (2Z, 2RS)	Oil (Open)
6800 2RS	10	19	5	1 830	925	32 000	38 000
6800 2Z	10	19	5	1 830	925	32 000	38 000
6900 2RS	10	22	6	2 700	1 270	30 000	36 000
6900 2Z	10	22	6	2 700	1 270	30 000	36 000
6000 2RS	10	26	8	4 550	1 960	30 000	36 000
6000 2Z	10	26	8	4 550	1 960	30 000	36 000
6200 2RS	10	30	9	5 100	2 390	24 000	30 000
6200 2Z	10	30	9	5 100	2 390	24 000	30 000
6300 2RS	10	35	11	5 880	3 500	23 000	27 000
6300 2Z	10	35	11	5 880	3 500	23 000	27 000
6801 2RS	12	21	5	1 920	1 040	29 000	35 000
6801 2Z	12	21	5	1 920	1 040	29 000	35 000
6901 2RS	12	24	6	2 891	1 468	27 000	32 000
6901 2Z	12	24	6	2 891	1 468	27 000	32 000
6001 2RS	12	28	8	5 110	2 390	28 000	32 000
6001 2Z	12	28	8	5 110	2 390	28 000	32 000
6201 2RS	12	32	10	6 180	3 060	22 000	28 000
6201 2Z	12	32	10	6 180	3 060	22 000	28 000
6301 2RS	12	37	12	9 700	4 650	20 000	24 000
6301 2Z	12	37	12	9 700	4 650	20 000	24 000
6201 1/2 2RS	12.7	32	10	6 180	3 060	22 000	28 000
6202 1/2 2RS	12.7	35	11	7 500	3 700	20 000	24 000
6203 1/2 2RS	12.7	40	12	9 600	4 780	18 000	21 000
6201 13 2RS	13	32	10	6 180	3 060	22 000	28 000
6802 2RS	15	24	5	2 080	1 254	26 000	31 000
6802 2Z	15	24	5	2 080	1 254	26 000	31 000
6902 2RS	15	28	7	4 315	4 350	24 000	28 000
6002 2RS	15	32	9	5 600	2 840	24 000	28 000
6002 2Z	15	32	9	5 600	2 840	24 000	28 000
6202 2RS	15	35	11	7 500	3 700	20 000	24 000
6202 2Z	15	35	11	7 500	3 700	20 000	24 000
6302 2RS	15	42	13	11 400	5 450	17 000	21 000
6302 2Z	15	42	13	11 400	5 450	17 000	21 000
6202 5/8 2RS	15.875	35	11	7 500	3 700	20 000	24 000
6203 5/8 2RS	15.875	40	12	9 600	4 780	18 000	21 000
6202 16 2RS	16	35	11	7 500	3 700	20 000	24 000
6203 16 2RS	16	40	12	9 600	4 780	18 000	21 000
6803 2RS	17	26	5	2 630	1 570	24 000	28 000
6903 2RS	17	30	7	4 671	2 579	22 000	26 000
6903 2Z	17	30	7	4 671	2 579	22 000	26 000
6003 2RS	17	35	10	6 800	3 350	22 000	26 000
6003 2Z	17	35	10	6 800	3 350	22 000	26 000
6203 2RS	17	40	12	9 600	4 780	18 000	21 000
6203 2Z	17	40	12	9 600	4 780	18 000	21 000
6303 2RS	17	47	14	13 500	6 580	16 000	19 000
6303 2Z	17	47	14	13 500	6 580	16 000	19 000

ASK FOR NATIONAL QUALITY

Note actual products may differ from photos shown in this brochure.
Product availability and specifications are subject to change without notice.



16000, 6800, 6900, 6000, 6200, 6300 SERIES BALL BEARINGS (Cont'd)

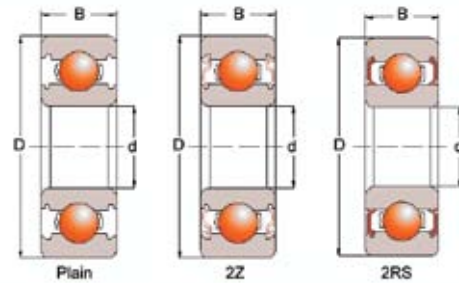


Bearing No.	d	D	B	Basic Load Ratings (N)		Limiting Speeds (RPM)	
	mm	mm	mm	Dynamic	Static	Grease (2Z, 2RS)	Oil (Open)
6203 3/4 2RS	19.05	40	12	9 600	4 780	18 000	21 000
6204 3/4 2RS	19.05	47	14	12 840	6 650	16 000	18 000
6804 2RS	20	32	7	4 000	2 464	21 000	25 000
6804 2Z	20	32	7	4 000	2 464	21 000	25 000
6904 2RS	20	37	9	6 400	3 700	19 000	23 000
6904 2Z	20	37	9	6 400	3 700	19 000	23 000
6004 2RS	20	42	12	9 400	5 050	18 000	20 000
6004 2Z	20	42	12	9 400	5 050	18 000	20 000
6204 2RS	20	47	14	12 840	6 650	16 000	18 000
6204 2RSNR	20	47	14	12 840	6 650	16 000	18 000
6204 2Z	20	47	14	12 840	6 650	16 000	18 000
6304 2RS	20	52	15	15 900	7 900	14 000	17 000
6304 2Z	20	52	15	15 900	7 900	14 000	17 000
60/22 2RS	22	44	12	9 400	5 050	17 000	20 000
62/22 2RS	22	50	14	12 900	6 800	14 000	17 000
63/22 2RS	22	56	16	18 400	9 250	13 000	15 000
6805 2RS	25	37	7	4 500	3 150	18 000	21 000
6805 2Z	25	37	7	4 500	3 150	18 000	21 000
6905 2RS	25	42	9	7 050	4 550	16 000	19 000
6005 2RS	25	47	12	10 400	5 850	15 000	18 000
6005 2Z	25	47	12	10 400	5 850	15 000	18 000
6205 2RS	25	52	15	14 020	7 880	13 000	15 000
6205 2Z	25	52	15	14 020	7 880	13 000	15 000
6305 2RS	25	62	17	21 200	11 390	12 000	13 000
6305 2Z	25	62	17	21 200	11 390	12 000	13 000
63305 2RS	25	62	25.4	21 200	10 900	8 100	13 000
6205 1 2RS	25.4	52	15	14 020	7 880	13 000	15 000
60/28 2RS	28	52	12	12 500	7 400	14 000	16 000
62/28 2RS	28	58	16	17 900	9 750	12 000	14 000
63/28 2RS	28	68	18	26 700	14 000	11 000	13 000
6806 2RS	30	42	7	4 700	3 650	15 000	18 000
6906 2RS	30	47	9	7 250	5 026	14 000	17 000
6006 2RS	30	55	13	13 200	8 300	13 000	15 000
6006 2Z	30	55	13	13 200	8 300	13 000	15 000
6206 2RS	30	62	16	19 500	11 300	11 000	13 000
6206 2Z	30	62	16	19 500	11 300	11 000	13 000
6306 2RS	30	72	19	26 700	15 000	10 000	12 000
6306 2Z	30	72	19	26 700	15 000	10 000	12 000
60/32 2RS	32	58	13	15 100	9 150	12 000	14 000
62/32 2RS	32	65	17	20 700	11 600	11 000	12 000
63/32 2RS	32	75	20	29 800	16 900	9 500	11 000
6807 2RS	35	47	7	4 900	4 100	13 000	16 000
6907 2RS	35	55	10	11 165	7 429	12 000	15 000
6007 2RS	35	62	14	16 000	10 300	11 000	13 000
6007 2Z	35	62	14	16 000	10 300	11 000	13 000
6207	35	72	17	25 700	15 300	9 800	11 000

ASK FOR NATIONAL QUALITY

Note actual products may differ from photos shown in this brochure.
Product availability and specifications are subject to change without notice.

16000, 6800, 6900, 6000, 6200, 6300 SERIES BALL BEARINGS (Cont'd)



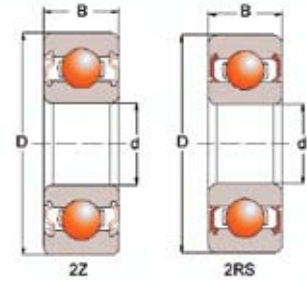
Bearing No.	d	D	B	Basic Load Ratings (N)		Limiting Speeds (RPM)	
	mm	mm	mm	Dynamic	Static	Grease (2Z, 2RS)	Oil (Open)
6207 2RS	35	72	17	25 700	15 300	9 800	11 000
6207 2Z	35	72	17	25 700	15 300	9 800	11 000
6307 2RS	35	80	21	33 500	19 100	8 800	10 000
6307 2Z	35	80	21	33 500	19 100	8 800	10 000
6808 2RS	40	52	7	5 100	4 400	12 000	14 000
6908 2RS	40	62	12	14 457	10 231	11 000	13 000
6008 2RS	40	68	15	16 800	11 500	10 000	12 000
6008 2Z	40	68	15	16 800	11 500	10 000	12 000
6208 2RS	40	80	18	29 100	17 800	8 700	10 000
6208 2Z	40	80	18	29 100	17 800	8 700	10 000
6308 2RS	40	90	23	40 500	24 000	7 800	9 200
6308 2Z	40	90	23	40 500	24 000	7 800	9 200
6809 2RS	45	58	7	5 400	5 300	11 000	12 000
6909 2RS	45	68	12	15 125	11 254	9 800	12 000
6009 2RS	45	75	16	21 000	15 100	9 200	11 000
6009 2Z	45	75	16	21 000	15 100	9 200	11 000
6209 2RS	45	85	19	32 500	20 400	7 800	9 200
6209 2Z	45	85	19	32 500	20 400	7 800	9 200
6309 2RS	45	100	25	53 000	32 000	7 000	8 200
6309 2Z	45	100	25	53 000	32 000	7 000	8 200
6010 2RS	50	80	16	21 800	16 600	8 400	9 800
6010 2Z	50	80	16	21 800	16 600	8 400	9 800
6210 2RS	50	90	20	35 000	23 200	7 100	8 300
6310 2RS	50	110	27	62 000	38 500	6 400	7 500
6310 2Z	50	110	27	62 000	38 500	6 400	7 500
6011 2RS	55	90	18	28 300	21 200	7 700	9 000
6211 2RS	55	100	21	43 500	29 200	6 400	7 600
6311 2RS	55	120	29	71 500	45 000	5 800	6 800
6912 2RS	60	85	13	16 500	12 000	7 500	9 000
6012 2RS	60	95	18	29 500	23 200	7 000	8 300
6212 2RS	60	110	22	52 500	36 000	6 000	7 000
6312 2RS	60	130	31	82 000	52 000	5 400	6 300
6013 2RS	65	100	18	30 600	25 200	6 500	7 700
6213 2Z	65	120	23	57 500	40 000	5 500	6 500
6313 2RS	65	140	33	92 500	60 000	4 900	5 800
16014	70	110	13	24 400	22 600	6 100	7 100
6014 2RS	70	110	20	38 000	31 000	6 100	7 100
6214 2RS	70	125	24	62 000	44 000	5 100	6 000
6314 2RS	70	150	35	104 000	68 000	4 600	5 400
6815 2RS	75	95	10	13 200	10 800	6 700	8 000
6015NR	75	115	20	39 500	33 500	5 700	6 700
6015 2RS	75	115	20	39 500	33 500	5 700	6 700
6215 2RS	75	130	25	66 000	48 500	4 800	5 600
6016	80	125	22	47 500	40 000	5 000	6 000
6020	100	150	24	60 000	54 000	4 000	4 800

ASK FOR NATIONAL QUALITY

Note actual products may differ from photos shown in this brochure.
Product availability and specifications are subject to change without notice.



SS6000, SS6200 SERIES STAINLESS STEEL BALL BEARINGS

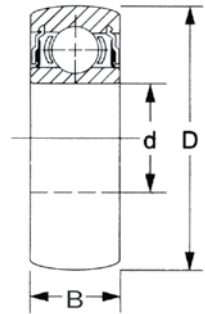
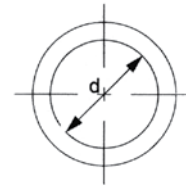


Bearing No.	d	D	B	Basic Load Ratings (N)		Limiting Speeds (RPM)	
	mm	mm	mm	Dynamic	Static	Grease (2Z, 2RS)	Oil (Open)
SS608 2RS	8	22	7	3 293	1 379	34 000	40 000
SS608 2Z	8	22	7	3 293	1 379	34 000	40 000
SS6000 2Z	10	26	8	4 550	1 960	30 000	36 000
SS6001 2RS	12	28	8	5 110	2 390	28 000	32 000
SS6201 2RS	12	32	10	6 180	3 060	22 000	28 000
SS6202 2RS	15	35	11	7 500	3 700	20 000	24 000
SS6203 2RS	17	40	12	9 600	4 780	18 000	21 000
SS6204 2RS	20	47	14	12 840	6 650	16 000	18 000
SS6204 2Z	20	47	14	12 840	6 650	16 000	18 000
SS6205 2RS	25	52	15	14 020	7 880	13 000	15 000

ASK FOR NATIONAL QUALITY

Note actual products may differ from photos shown in this brochure.
Product availability and specifications are subject to change without notice.

CS200, CS300 SERIES SPHERICAL O.D. BALL BEARINGS

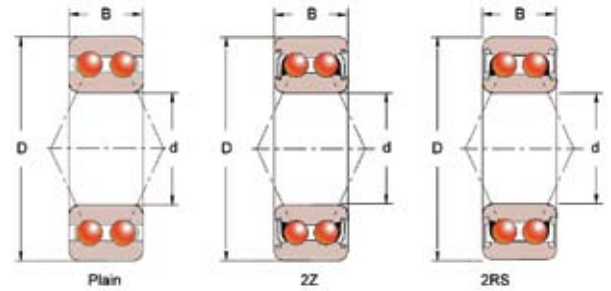


Bearing No.	d Bore	D O.D.	B Width	Basic Load Ratings (N)		Limiting Speeds (RPM)	
	mm	mm	mm	Dynamic	Static	Grease (Z. 2RS)	Oil (Open)
CS203DDU	17	40	12	9 600	4 780	18 000	21 000
CS204DDU	20	47	14	12 840	6 650	16 000	18 000
CS205DDU	25	52	15	14 020	7 880	13 000	15 000
CS206DDU	30	62	16	19 500	11 300	11 000	13 000
CS207DDU	35	72	17	25 700	15 300	9 800	11 000
CS208DDU	40	80	18	29 100	17 800	8 700	10 000
CS209DDU	45	85	19	32 500	20 400	7 800	9 200
CS210DDU	50	90	20	35 000	23 200	7 100	8 300
CS305DDU	25	62	17	21 200	11 390	12 000	13 000
CS306DDU	30	72	19	26 700	15 000	10 000	12 000
CS307DDU	35	80	21	33 500	19 100	8 800	10 000
CS308DDU	40	90	23	40 500	24 000	7 800	9 200
CS309DDU	45	100	25	53 000	32 000	7 000	8 200
CS310DDU	50	110	27	62 000	38 500	6 400	7 500

ASK FOR NATIONAL QUALITY

Note actual products may differ from photos shown in this brochure.
Product availability and specifications are subject to change without notice.

3200 SERIES DOUBLE ROW ANGULAR CONTACT BALL BEARINGS

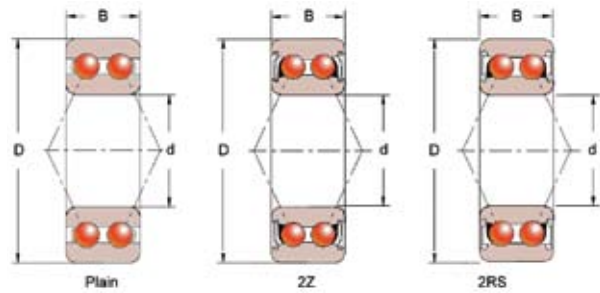


Bearing No.	d Bore	D O.D.	B Width	Basic Load Ratings (N)		Weight (kg)
	mm	mm	mm	Dynamic	Static	
3200 2RSC3	10	30	14	7 410	4 800	0.051
3200 2ZC3	10	30	14	7 410	4 800	0.051
3201 2RSC3	12	32	15.9	10 100	5 600	0.058
3202 2RSC3	15	35	15.9	11 200	6 800	0.066
3202 2ZC3	15	35	15.9	11 200	6 800	0.066
3203 2RSC3	17	40	17.5	14 000	8 650	0.096
3203 2ZC3	17	40	17.5	14 000	8 650	0.096
3204 2RSC3	20	47	20.6	18 600	12 000	0.16
3204 2ZC3	20	47	20.6	18 600	12 000	0.16
3205C3	25	52	20.6	20 300	14 000	0.18
3205 2RSC3	25	52	20.6	20 300	14 000	0.18
3205 2ZC3	25	52	20.6	20 300	14 000	0.18
3206C3	30	62	23.8	28 100	20 000	0.29
3206 2RSC3	30	62	23.8	28 100	20 000	0.29
3206 2ZC3	30	62	23.8	28 100	20 000	0.29
3207C3	35	72	27	37 100	27 500	0.44
3207 2RSC3	35	72	27	37 100	27 500	0.44
3207 2ZC3	35	72	27	37 100	27 500	0.44
3208 2RSC3	40	80	30.2	44 900	33 500	0.58
3208 2ZC3	40	80	30.2	44 900	33 500	0.58
3209 2RSC3	45	85	30.2	47 500	38 000	0.63
3210C3	50	90	30.2	47 500	39 000	0.66
3210 2RSC3	50	90	30.2	47 500	39 000	0.66
3211 2RSC3	55	55	33.3	57 200	67 000	1.05
3212 2RSC3	60	110	36.5	72 100	85 000	1.40
3216 2RSC3	80	140	44.4	101 000	134 000	2.65

ASK FOR NATIONAL QUALITY

Note actual products may differ from photos shown in this brochure.
Product availability and specifications are subject to change without notice.

3300 SERIES DOUBLE ROW ANGULAR CONTACT BALL BEARINGS



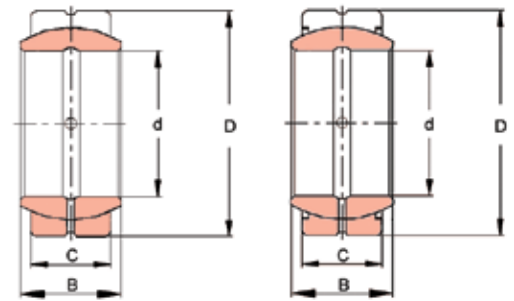
Bearing No.	d Bore	D O.D.	B Width	Basic Load Ratings (N)		Weight (kg)
	mm	mm	mm	Dynamic	Static	
3302C3	15	42	19.0	15 100	8 150	0.13
3302 2RSC3	15	42	19.0	15 100	8 150	0.13
3303 2RSC3	17	47	22.2	21 200	12 500	0.18
3303 2ZC3	17	47	22.2	21 200	12 500	0.18
3304 2RSC3	20	52	22.2	22 100	14 300	0.22
3304 2ZC3	20	52	22.2	22 100	14 300	0.22
3305 2RSC3	25	62	25.4	31 200	20 800	0.35
3305 2ZC3	25	62	25.4	31 200	20 800	0.35
3306C3	30	72	30.2	41 000	28 500	0.53
3306 2RSC3	30	72	30.2	41 000	28 500	0.53
3306 2ZC3	30	72	30.2	41 000	28 500	0.53
3307C3	35	80	34.9	48 800	34 000	0.73
3307 2RSC3	35	80	34.9	48 800	34 000	0.73
3307 2ZC3	35	80	34.9	48 800	34 000	0.73
3308 2RSC3	40	90	36.5	59 200	43 000	0.95
3309 2RSC3	45	100	39.7	72 100	73 500	1.40
3310 2RSC3	50	110	44.4	88 000	96 500	1.95
3311 2RSC3	55	120	49.2	95 200	108 000	2.55

ASK FOR NATIONAL QUALITY

Note actual products may differ from photos shown in this brochure.
Product availability and specifications are subject to change without notice.



SBB SERIES IMPERIAL SPHERICAL PLAIN BEARINGS

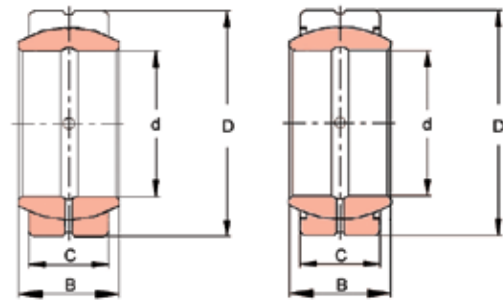


Bearing No.	d	D	B	C	Angle	Basic Load Ratings (kN)	
	Inch	Inch	Inch	Inch	Degree	Dynamic	Static
SBB8	0.500	0.875	0.437	0.375	6	13	41
SBB10	0.625	1.063	0.547	0.469	6	22	65
SBB12	0.750	1.250	0.656	0.562	6	31	95
SBB12 2RS	0.750	1.250	0.656	0.562	6	31	95
SBB14	0.875	1.438	0.765	0.656	6	42	127
SBB14 2RS	0.875	1.438	0.765	0.656	6	42	127
SBB16	1.000	1.625	0.875	0.750	6	56	166
SBB16 2RS	1.000	1.625	0.875	0.750	6	56	166
SBB20	1.250	1.992	1.093	0.937	6	86	260
SBB20 2RS	1.250	1.992	1.093	0.937	6	86	260
SBB22	1.375	2.188	1.187	0.992	6	102	310
SBB22 2RS	1.375	2.188	1.187	0.992	6	102	310
SBB24	1.500	2.438	1.312	1.125	6	125	375
SBB24 2RS	1.500	2.438	1.312	1.125	6	125	375
SBB28	1.750	2.813	1.531	1.312	6	170	510
SBB28 2RS	1.750	2.813	1.531	1.312	6	170	510
SBB32	2.000	3.188	1.750	1.500	6	224	670
SBB32 2RS	2.000	3.188	1.750	1.500	6	224	670
SBB36	2.250	3.563	1.969	1.687	6	280	850
SBB36 2RS	2.250	3.563	1.969	1.687	6	280	850
SBB40	2.500	3.938	2.187	1.875	6	355	1 060
SBB40 2RS	2.500	3.938	2.187	1.875	6	355	1 060
SBB44	2.750	4.375	2.406	2.062	6	415	1 250
SBB44 2RS	2.750	4.375	2.406	2.062	6	415	1 250
SBB48	3.000	4.750	2.633	2.250	6	500	1 500
SBB48 2RS	3.000	4.750	2.633	2.250	6	500	1 500
SBB52	3.250	5.125	2.844	2.437	6	585	1 760
SBB56	3.500	5.500	3.062	2.625	6	680	2 040
SBB56 2RS	3.500	5.500	3.062	2.625	6	680	2 040
SBB60	3.750	5.875	3.281	2.812	6	780	2 360
SBB64	4.000	6.250	3.500	3.000	6	900	2 650
SBB64 2RS	4.000	6.250	3.500	3.000	6	900	2 650
SBB80	5.000	7.750	4.375	3.750	6	1 400	4 150
SBB96 2RS	6.000	8.750	4.750	4.125	5	1 730	5 200

ASK FOR NATIONAL QUALITY

Note actual products may differ from photos shown in this brochure.
Product availability and specifications are subject to change without notice.

GE SERIES METRIC SPHERICAL PLAIN BEARINGS



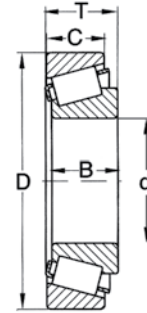
Bearing No.	d	D	B	C	Basic Load Ratings (kN)		Weight (kg)
	mm	mm	mm	mm	Dynamic	Static	
GE12E	12	22	10	7	10.8	54.0	0.016
GE15ES	15	26	12	9	17.0	85.0	0.025
GE17ES 2RS	17	30	14	10	21.2	106	0.041
GE20ES	20	35	16	12	30.0	146	0.061
GE20ES 2RS	20	35	16	12	30.0	146	0.061
GE25ES 2RS	25	42	20	16	48.0	240	0.11
GE30ES	30	47	22	18	62.0	310	0.14
GE30ES 2RS	30	47	22	18	62.0	310	0.14
GE35ES	35	55	25	20	80.0	400	0.22
GE35ES 2RS	35	55	25	20	80.0	400	0.22
GE40ES	40	62	28	22	100	500	0.30
GE40ES 2RS	40	62	28	22	100	500	0.30
GE45ES	45	68	32	25	127	640	0.40
GE45ES 2RS	45	68	32	25	127	640	0.40
GE50ES	50	75	35	28	156	780	0.54
GE50ES 2RS	50	75	35	28	156	780	0.54
GE60ES	60	90	44	36	245	1222	1.00
GE60ES 2RS	60	90	44	36	245	1222	1.00
GE70ES	70	105	49	40	315	1560	1.50
GE70ES 2RS	70	105	49	40	315	1560	1.50
GE80ES	80	120	55	45	400	2000	2.20
GE80ES 2RS	80	120	55	45	400	2000	2.20
GE90ES 2RS	90	130	60	50	490	2450	2.70
GE100ES 2RS	100	150	70	55	610	3050	4.30
GE110ES 2RS	110	160	70	55	655	3250	4.70
GE140ES 2RS	140	210	90	70	1080	5400	11.0

ASK FOR NATIONAL QUALITY

Note actual products may differ from photos shown in this brochure.
Product availability and specifications are subject to change without notice.



IMPERIAL SERIES TAPERED ROLLER BEARINGS



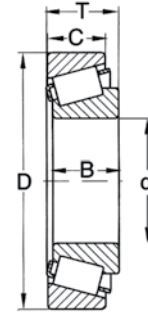
Bearing No.		Boundary Dimensions (Inch)					Basic Load Ratings (lbf)	
Cone	Cup	d	D	T	B	C	Dynamic	Static
387A	382A	2.2500	3.8125	0.8268	0.8640	0.6250	18 900	4 910
387AS	382A	2.2500	3.8125	0.8268	0.8640	0.6250	18 900	4 910
535	532A	1.7500	4.3750	1.5000	1.4550	1.1875	35 800	9 290
575	572	3.0000	5.5115	1.4375	1.4212	1.1250	43 000	11 200
580	572	3.2500	5.5115	1.4375	1.4212	1.1250	43 000	11 200
594A	592A	3.7500	6.0000	1.5625	1.4300	1.1875	45 000	11 700
643	632	2.7500	5.3750	1.6250	1.6250	1.2500	48 500	12 600
2788	2720	1.5000	3.0000	0.9360	1.0100	0.7500	18 100	4 690
2788	2735X	1.5000	2.8750	0.9375	1.0100	0.7500	18 100	4 690
3780	3720	2.0000	3.6718	1.1875	1.1930	0.9375	25 400	6 590
3980	3920	2.3750	4.4375	1.1875	1.1830	0.9375	28 900	7 490
3984	3920	2.6250	4.4375	1.1875	1.1830	0.9375	28 900	7 490
A4059	A4138	0.5901	1.3775	0.4330	0.4326	0.3437	2 740	710
09067	09195	0.7500	1.9380	0.7100	0.7500	0.5625	8 920	2 310
09067	09196	0.7500	1.9380	0.8350	0.7500	0.6875	8 920	2 310
09074	09195	0.7500	1.9380	0.8350	0.8480	0.5625	8 920	2 310
09074	09196	0.7500	1.9380	0.8350	0.8480	0.6875	8 920	2 310
LM11749	LM11710	0.6875	1.5700	0.5450	0.5750	0.4200	5 160	1 340
LM11949	LM11910	0.7500	1.7810	0.6100	0.6550	0.4750	6 870	1 780
M12649	M12610	0.8437	1.9687	0.6900	0.7200	0.5500	9 170	2 380
LM12749	LM12710	0.8656	1.7810	0.6100	0.6550	0.4750	6 780	1 760
LM12749	LM12711	0.8656	1.8100	0.6100	0.6550	0.4750	6 780	1 760
14125A	14274	1.2500	2.7170	0.7813	0.7710	0.6250	11 400	2 950
14125A	14276	1.2500	2.7170	0.7813	0.7710	0.6250	11 400	2 950
14137A	14274	1.3750	2.7170	0.7813	0.7710	0.6250	11 400	2 950
14137A	14276	1.3750	2.7170	0.7813	0.7710	0.6250	11 400	2 950
14138A	14274	1.3750	2.7170	0.7813	0.7710	0.6250	11 400	2 950
14138A	14276	1.3750	2.7170	0.7813	0.7710	0.6250	11 400	2 950
15101	15245	1.0000	2.4409	0.7500	0.8125	0.5625	10 500	2 730
15123	15245	1.2500	2.4409	0.7500	0.7500	0.5625	10 500	2 730
25580	25520	1.7500	3.6250	0.9375	1.0000	0.7500	18 800	4 880
25590	25520	1.7960	3.6250	0.9375	1.0000	0.7500	18 800	4 880
27684	27620	3.0000	4.9375	1.0000	1.0000	0.7813	24 400	6 320

TAPERED ROLLER BEARINGS

ASK FOR NATIONAL QUALITY

Note actual products may differ from photos shown in this brochure.
Product availability and specifications are subject to change without notice.

IMPERIAL SERIES TAPERED ROLLER BEARINGS (Cont'd)



Bearing No.		Boundary Dimensions (Inch)					Basic Load Ratings (lbf)	
Cone	Cup	d	D	T	B	C	Dynamic	Static
LM29749	LM29710	1.5000	2.5625	0.7100	0.7200	0.5500	10 100	2 620
39590	39520	2.6250	4.4375	1.1875	1.1875	0.9375	34 700	9 010
L44643	L44610	1.0000	1.9800	0.5600	0.5800	0.4200	6 260	1 620
L44649	L44610	1.0625	1.9800	0.5600	0.5800	0.4200	6 260	1 620
L45449	L45410	1.1417	1.9800	0.5600	0.5800	0.4200	6 230	1 620
47487	47420	2.7500	4.7244	1.2813	1.2813	1.0313	37 200	9 650
LM48548	LM48510	1.3750	2.5625	1.5000	0.7200	0.5500	11 300	2 940
LM67048	LM67010	1.2500	2.3280	1.2810	0.6600	0.4650	8 210	2 130
L68149	L68110	1.3775	2.3280	0.6250	0.6600	0.4700	7 990	2 070
L68149	L68111	1.3775	2.3612	0.6250	0.6600	0.4700	7 990	2 070
JL69349	JL69310	1.4961	2.4803	0.6693	0.6693	0.5315	8 960	2 320
M86649	M86610	1.1875	2.5312	0.8438	0.8438	0.6563	12 500	3 250
M88048	M88010	1.3125	2.6875	0.8750	0.8750	0.6875	13 400	3 470
LM102949	LM102910	1.7812	2.8910	0.7700	0.7800	0.6200	12 800	3 320
JLM104948	JLM104910	1.9685	3.2283	0.8465	0.8465	0.6693	16 900	4 390
LM104949	LM104911	2.0000	3.2500	0.8500	0.8750	0.6500	16 900	4 390
HM212049	HM212011	2.6250	4.8125	1.5000	1.5100	1.1700	46 900	12 200
LM501349	LM501310	1.6250	2.8910	0.7700	0.7800	0.5800	13 100	3 410
LM501349	LM501314	1.6250	2.8910	0.8437	0.7800	0.6537	13 100	3 410
JLM506849	JLM506810	2.1654	3.5433	0.9055	0.9055	0.7283	19 100	4 960
LM603049	LM603011	1.7812	3.0625	0.7812	0.7812	0.5937	13 400	3 470
LM603049	LM603012	1.7812	3.0625	0.8437	0.7812	0.6562	13 400	3 470
M802048	M802011	1.6250	3.2500	1.0450	1.0100	0.7950	19 100	4 950

SET No.	Cone	Cup
SET 2	LM11949	LM11910
SET 4	L44649	L44610
SET 14	L44643	L44610
SET 52	25580	25520

Bearing No.	Description
LM67000LA	LM67048 with seal

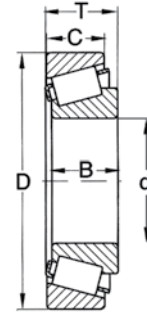


ASK FOR NATIONAL QUALITY

Note actual products may differ from photos shown in this brochure.
Product availability and specifications are subject to change without notice.



METRIC SERIES TAPERED ROLLER BEARINGS



Bearing No.	Boundary Dimensions (Inch)					Basic Load Ratings (lbf)	
	d	D	T	B	C	Dynamic	Static
	mm	mm	mm	mm	mm	(kN)	(kN)
30203	17.000	40.000	13.250	12.000	11.000	19.3	19.0
30204A	20.000	47.000	15.250	14.000	12.000	27.5	27.5
30205	25.000	52.000	16.250	15.000	13.000	32.5	35.5
30209	45.000	85.000	20.750	19.000	16.000	71.0	83.0
30212	60.000	110.000	23.750	22.000	19.000	104.0	122.0
30304A	20.000	52.000	16.250	15.000	13.000	34.5	33.5
30310	50.000	110.000	29.250	27.000	23.000	132.0	150.0
32005X	25.000	47.000	15.000	15.000	11.500	26.5	34.0
32009	45.000	75.000	20.000	20.000	15.500	61.0	86.5
32206	30.000	62.000	21.250	20.000	17.000	54.0	63.0
32209	45.000	85.000	24.750	23.000	19.000	83.0	100.0
32210	50.000	90.000	24.750	23.000	19.000	88.0	110.0
32308	40.000	90.000	35.250	33.000	27.000	122.0	150.0

ASK FOR NATIONAL QUALITY

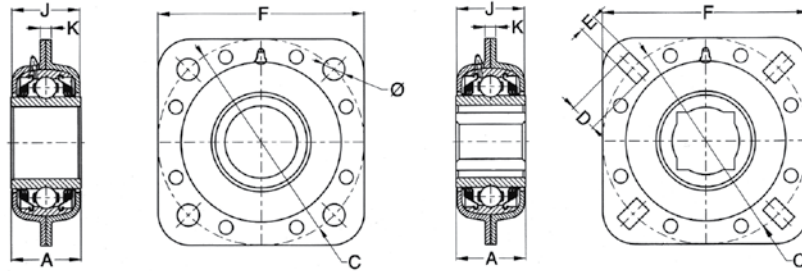
Note actual products may differ from photos shown in this brochure.
Product availability and specifications are subject to change without notice.

AGRICULTURAL BEARINGS





AGRICULTURAL BEARINGS TRI-PLY SEAL SQUARE FLANGE UNITS

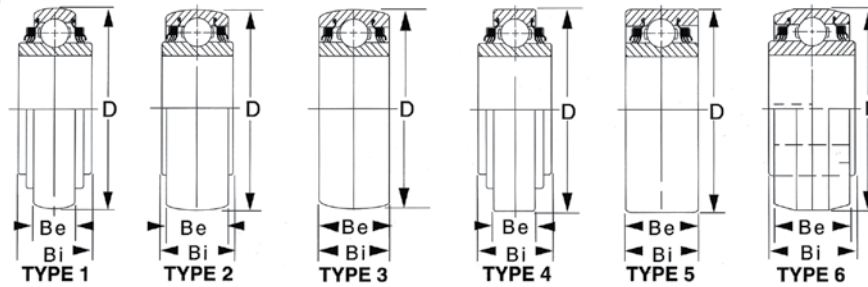
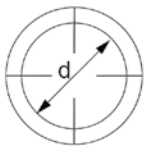


Bearing No.	Dimensions (Inch)									
	Shaft	Bore Type	Bolt Hole Diameter	D	E	A	C	F	J	K
ST491A	1 3/4	Round	13.5			42.85	127	127	41.7	6.75
ST491B	1 1/2	Round		16.7	13.5	42.85	127	127	41.7	6.75

ASK FOR NATIONAL QUALITY

Note actual products may differ from photos shown in this brochure.
Product availability and specifications are subject to change without notice.

ROUND BORE NON-RELUBRICATABLE



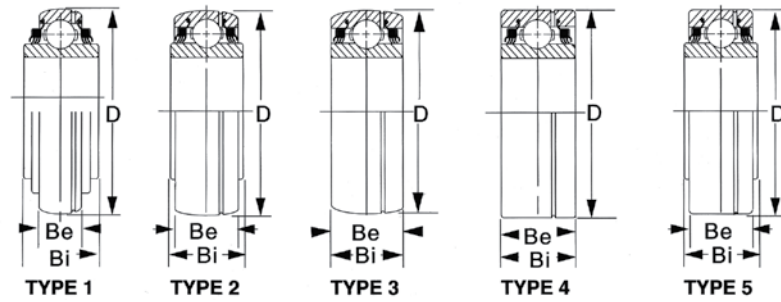
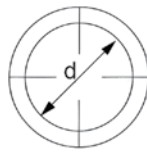
Bearing No.	Type	Dimensions (mm)				Basic Load Ratings (kN)		Weight (kg)
		d	D	Width		Dynamic	Static	
				Be	Bi			
W208PPB2	1	38.113	80.000	18.000	42.875	36.8	19.9	0.72
W208PPB4	3	30.163	80.000	30.175	30.175	36.8	19.9	0.66
W208PPB7	2	30.170	80.000	18.000	30.175	36.8	19.9	0.64
W208PP10	4	38.113	80.000	21.000	42.875	36.8	19.9	0.68
W208PPB14	6	22.225	87.320	30.180	36.510	36.8	19.9	0.70
W208PPB23	2	38.113	80.000	30.175	42.875	32.0	15.6	0.68
W209PPB2	3	45.000	85.000	30.175	30.175	36.8	20.2	0.65
W209PPB4	3	39.000	85.000	30.175	30.175	36.8	20.2	0.75
W210PP2	5	49.225	90.000	30.175	30.175	39.9	23.0	0.77
W210PPB2	3	49.225	90.000	30.175	30.175	39.9	23.0	0.71
W210PPB5	3	45.339	90.000	30.175	30.175	39.9	23.0	0.79
W211PP2	5	55.575	100.000	33.325	33.325	48.8	29.0	1.06
W211PPB2	3	55.575	100.000	33.325	33.325	48.8	29.0	0.97
W214PPB2	3	70.000	125.000	39.675	39.675	71.0	43.5	1.80
W214PPB9	3	70.256	125.000	28.000	44.450	71.0	43.5	1.80

ASK FOR NATIONAL QUALITY

Note actual products may differ from photos shown in this brochure.
Product availability and specifications are subject to change without notice.



ROUND BORE RELUBRICATABLE

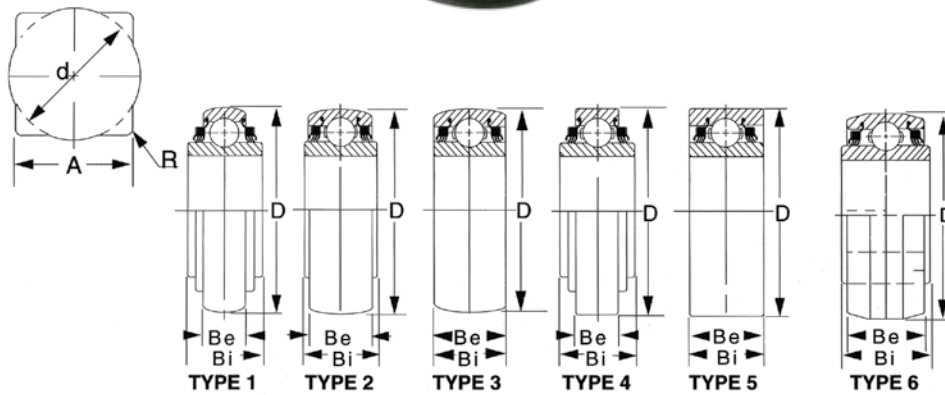


Bearing No.	Type	Dimensions (mm)				Basic Load Ratings (kN)		Weight (kg)
		d	D	Width		Dynamic	Static	
				Be	Bi			
GW209PPB2	3	45.000	85.000	30.175	30.175	36.8	20.2	0.65
GW209PPB4	3	39.000	85.000	30.175	30.175	36.8	20.2	0.75
GW209PPB11	1	45.237	85.000	22.000	36.525	36.8	20.2	0.62
GW210PPB2	3	49.225	90.000	30.175	30.175	39.9	23.0	0.68
GW210PPB5	3	45.339	90.000	30.175	30.175	39.9	23.0	0.79
GW210PP9	5	49.403	90.000	23.000	36.525	39.9	23.0	0.79
GW211PP2	4	55.575	100.000	33.325	33.325	48.8	29.0	1.36
GW211PPB2	3	55.575	100.000	33.325	33.325	48.8	29.0	1.19
GW211PPB9	1	55.573	100.000	25.000	39.675	48.8	29.0	0.92
GW211PPB10	3	49.225	100.000	33.325	33.325	48.8	29.0	1.03
GW211PPB13	1	45.339	100.000	25.000	33.325	48.8	29.0	0.92
GW214PP2	4	70.000	125.000	39.675	39.675	71.0	43.5	1.9
GW214PPB2	3	70.000	125.000	39.675	39.675	71.0	43.5	1.8
GW214PPB3	3	49.225	125.000	39.675	39.675	71.0	43.5	1.93
GW214PPB6	1	68.278	125.000	28.000	68.263	71.0	43.5	2.16

ASK FOR NATIONAL QUALITY

Note actual products may differ from photos shown in this brochure.
Product availability and specifications are subject to change without notice.

SQUARE BORE NON-RELUBRICATABLE



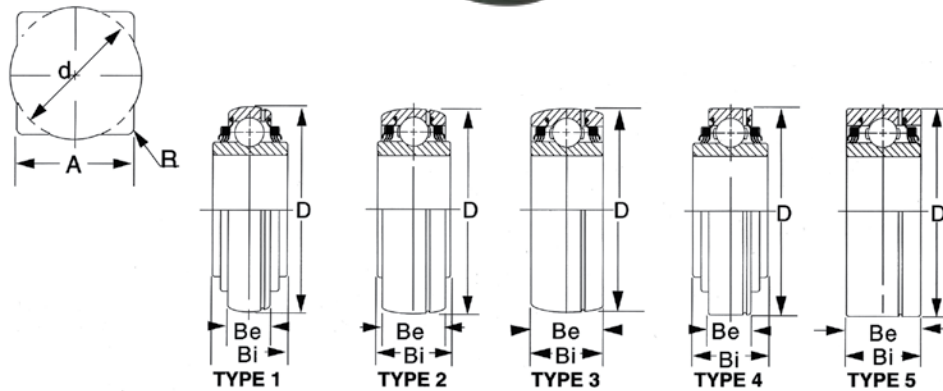
Bearing No.	Type	Dimensions (mm)					Basic Load Ratings (kN)		Weight (kg)
		Shaft	A Nominal	D	Width		Dynamic	Static	
					Be	Bi			
W208PP5	4	28.575	29.972	80.000	18.000	36.525	36.8	19.9	0.68
W208PPB5	1	28.575	29.970	80.000	18.000	36.525	36.8	19.9	0.67
W208PPB6	1	25.400	26.162	80.000	18.000	36.525	36.8	19.9	0.72
W208PP8	4	28.575	29.972	80.000	30.175	36.525	36.8	19.9	0.75
W208PPB8	2	28.575	29.972	80.000	18.000	36.525	36.8	19.9	1.65
W208PPB9	2	25.400	26.162	80.000	30.175	36.525	36.8	19.9	1.74
W208PPB11	6	22.225	23.000	85.750	30.175	36.525	36.8	19.9	2.05
W208PPB12	6	28.575	29.972	85.750	30.175	36.525	36.8	19.9	1.87
W208PPB13	1	22.225	23.000	80.000	18.000	36.525	36.8	19.9	0.74
W209PPB5	2	31.750	32.766	85.000	30.175	36.525	36.8	20.2	0.79
W209PPB7	6	31.750	32.766	85.750	30.175	36.525	36.8	20.2	1.85
W210PP4	5	28.575	29.972	90.000	30.175	30.175	39.9	23.0	0.95
W210PPB4	3	28.575	29.972	90.000	30.175	30.175	39.9	23.0	0.96
W211PP3	5	38.100	38.890	100.000	33.324	33.324	48.8	29.0	1.27
W211PPB3	3	38.100	38.890	100.000	33.324	33.324	48.8	29.0	1.21
W211PP5	4	38.100	38.890	101.600	36.525	44.450	48.8	29.0	1.58
W211PPB6	6	38.100	38.890	103.556	36.525	44.450	48.8	29.0	1.84

ASK FOR NATIONAL QUALITY

Note actual products may differ from photos shown in this brochure.
Product availability and specifications are subject to change without notice.



SQUARE BORE RELUBRICATABLE

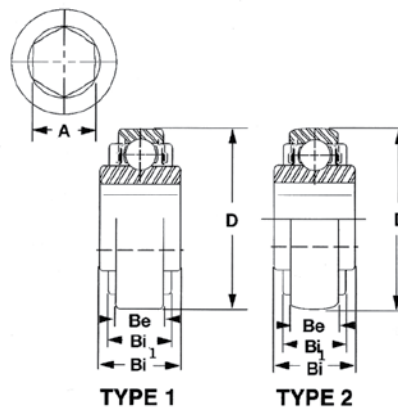


Bearing No.	Type	Dimensions (mm)					Basic Load Ratings (kN)		Weight (kg)
		Shaft	A Nominal	D	Width		Dynamic	Static	
					Be	Bi			
GW208PPB5	1	28.575	29.972	80.000	21.000	36.525	36.80	19.90	0.67
GW208PPB6	1	25.400	26.162	80.000	21.000	36.525	36.80	19.90	0.79
GW208PPB8	2	28.575	29.972	80.000	30.175	36.525	36.80	19.90	0.79
GW208PP17	4	28.575	29.972	85.738	30.175	36.525	36.80	19.90	0.93
GW209PPB5	2	31.750	32.776	85.000	30.175	36.525	36.80	20.20	0.79
GW209PPB8	1	31.750	32.776	85.000	22.000	36.525	36.80	20.20	0.75
GW210PP4	5	28.575	29.972	90.000	30.175	30.175	39.90	23.00	1.05
GW210PPB4	3	28.575	29.972	90.000	30.175	30.175	39.90	23.00	0.79
GW211PP3	5	38.100	39.890	100.000	33.325	33.325	48.80	29.00	1.27
GW211PPB3	3	38.100	38.890	100.000	33.325	33.326	48.80	29.00	1.21
GW211PP17	4	38.100	38.890	100.000	33.325	44.450	48.80	29.00	1.19

ASK FOR NATIONAL QUALITY

Note actual products may differ from photos shown in this brochure.
Product availability and specifications are subject to change without notice.

HEX BORE SERIES AGRICULTURAL BEARINGS



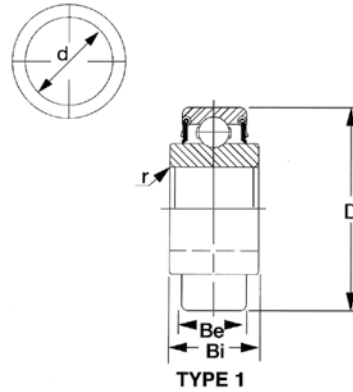
Bearing No.	Type	Dimensions (mm)					Basic Load Ratings (N)	
		Hex Shaft Size (Inch)	A Nominal	D	Width		Dynamic	Static
					Be	Bi		
204KRR2	1	11/16"	17.653	47.000	14.000	20.955	12 889	6 267
205KRR2	1	7/8"	22.250	52.000	15.000	25.400	14 000	7 156
205KRRB2	2	7/8"	22.250	52.000	15.000	25.400	14 000	7 156
206KRR6	1	1"	25.425	62.000	16.000	24.000	19 422	10 311
206KRRB6	2	1"	25.425	62.000	16.000	24.000	19 422	10 311
207KRRB9	2	1 1/8"	28.600	72.000	17.000	37.694	25 644	14 000
207KRRB12	2	1 1/8"	28.600	72.000	17.000	25.000	25 644	14 000
W208PPB16	2	1 1/4"	31.775	80.000	18.000	36.520	32 622	16 222

ASK FOR NATIONAL QUALITY

Note actual products may differ from photos shown in this brochure.
Product availability and specifications are subject to change without notice.



200 SERIES AGRICULTURAL BEARINGS

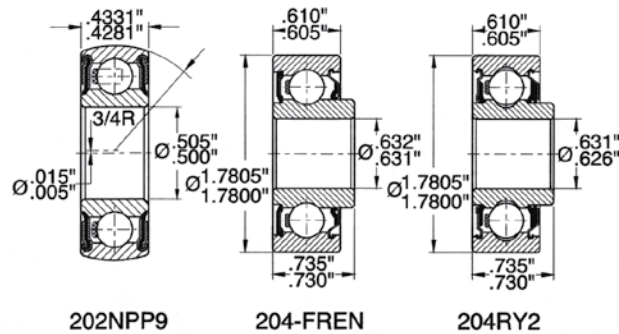


Bearing No.	Type	Dimensions (mm)			
		d	D	Width	
				Be	Bi
203KRR2	1	16.260	40.000	12.000	18.288
203KRR5	1	13.081	40.000	12.000	18.288

ASK FOR NATIONAL QUALITY

Note actual products may differ from photos shown in this brochure.
Product availability and specifications are subject to change without notice.

SPECIAL SIZES AGRICULTURAL BEARINGS



Bearing No.	Dimensions (mm)				Description
	Bore	O.D.	Inner Ring Width	Outer Ring Width	
202NPP9	12.827	38.100	11.000	11.000	O.D. turned to 3/4 radius. Shroud seals.
203KRR3	15.951	50.800	15.000	15.000	Thick outer ring, two inch O.D. Shroud seals.
204KRD4	16.000	47.000	17.500	14.000	Special bore. Trash seals.
204RY2	16.027	45.225	18.669	15.494	Gothic arch race. Double lip shroud seal extended side, single lip shroud seal opposite.
204FREN	16.027	45.225	18.669	15.494	Special 204 with wide Inner Ring. Double sealed.
205R3	15.875	52.000	35.000	15.000	Special bore, extended Inner Ring. Triple seals.
Z9504AB	19.060	45.225	15.494	15.494	Basic 6204-2RS with 3/4 bore and .610 width. Rubber seals.

ASK FOR NATIONAL QUALITY

Note actual products may differ from photos shown in this brochure.
Product availability and specifications are subject to change without notice.



NATIONAL AGRICULTURAL BEARING INTERCHANGE

NATIONAL	FAFNIR	BCA	NTN	RHP
202NPP9	202NPP9	202FFH8	-	-
203KRR2	203KRR2	203RRAR10	-	-
203KRR3	203KRR3	8984YY	-	-
203KRR5	203KRR5	203RRAR8	-	-
204KRD4	204KRD4	204FGB	-	-
204KRR2	204KRR2	HPC011GP	1AH04-11/16	-
204RY2	204RY2	204FVMN	-	-
205KRR2	205KRR2	HPC014GP	1AH05-7/8	-
205KRRB2	205KRRB2	HPS014GP	2AH05-7/8	-
205R3	-	-	-	-
206KRR6	206KRR6	HPC100GP	1AH06-1	-
206KRRB6	206KRRB6	HPS100GP	2AH06-1	-
207KRRB12	207KRRB12	HPS102GPE	-	-
207KRRB9	207KRRB9	HPS102GP	2AH07-1.1/8	-
CS203DDU	203NPPB	S203FF	CS203LLU	1726203-2RS
CS204DDU	204NPPB	S204FF	CS204LLU	1726204-2RS
CS205DDU	205NPPB	S205FF	CS205LLU	1726205-2RS
CS206DDU	206NPPB	S206FF	CS206LLU	1726206-2RS
CS207DDU	207NPPB	S207FF	CS207LLU	1726207-2RS
CS208DDU	208NPPB	S208FF	CS208LLU	1726208-2RS
CS209DDU	209NPPB	S209FF	CS209LLU	1726209-2RS
CS210DDU	-	-	-	1726210-2RS
CS305DDU	-	-	-	-
CS306DDU	-	-	-	-
CS307DDU	-	-	-	-
CS308DDU	-	-	-	1726308-2RS
CS309DDU	-	-	-	1726309-2RS
CS310DDU	-	-	-	1726310-2RS
GW208PP17	GW208PP17	DC208TTR17	-	-
GW208PPB5	GW208PPB5	DS208TTR21	1AS08-1.5/32D1	1/PDNF240/9G

ASK FOR NATIONAL QUALITY

Note actual products may differ from photos shown in this brochure.
Product availability and specifications are subject to change without notice.

NATIONAL AGRICULTURAL BEARING INTERCHANGE

NATIONAL	FAFNIR	BCA	NTN	RHP
GW208PPB6	GW208PPB6	DS208TTR6	-	1/PDNF240/8G
GW208PPB8	GW208PPB8	DS208TTR8	2AS08-1.1/8D1	PDNF240/9G
GW209PPB11	GW209PPB11	DS209TTR10	1AC09D1V1	28/DNF245-45G
GW209PPB2	GW209PPB2	DS209TTR2	3AC09D1	PDNF145-45G
GW209PPB4	GW209PPB4	DS209TTR4	3AC09-1.1/2D1	28/PDNF145-1.1/2G
GW209PPB5	GW209PPB5	DS209TTR5	2AS09-1.1/4D1	PDNF245/10G
GW209PPB8	GW209PPB8	DS209TTR8	-	DNF245/10G
GW210PP4	GW210PP4	DC210TTR4	7AS10-1.1/8D1	PDF150/9G
GW210PP9	GW210PP9	-	-	-
GW210PPB2	GW210PPB2	DS210TTR2	3AC10-1.15/16D1	PDNF150-1.15/16G
GW210PPB4	GW210PPB4	DS210TTR4	3AS10-1.1/8D1	PDNF150/9G
GW210PPB5	GW210PPB5	DS210TTR5R	3AC10-1.3/4D1	-
GW211PP17	GW211PP17	DC211TTR3E	-	-
GW211PP2	GW211PP2	DC211TTR2	7AS11-1.1/2D1	PDF155-2.3/16G
GW211PP3	GW211PP3	DC211TTR3	7AS11-1.1/2D1	PDF155/12G
GW211PPB10	GW211PPB10	-	-	-
GW211PPB13	GW211PPB13	DS211TTR13	-	-
GW211PPB2	GW211PPB2	DS211TTR2	3AC11-2.3/16D1	PDNF155-2.3/16G
GW211PPB3	GW211PPB3	DS211TTR3	3AS11-1.1/2D1	PDNF155/12G
GW211PPB9	GW211PPB9	DS211TTR9	-	-
GW214PP2	GW214PP2	DC214TTR2	-	-
GW214PPB2	GW214PPB2	-	3AC14D1	-
GW214PPB3	-	DS214TTR3	-	-
GW214PPB6	-	DC216TTR2	-	-
ST491A	491A	FD209RA	-	-
ST491B	DHU1-1/2R-209	FD209RB	-	-
W208PP10	W208PP10	DC208TT10	-	36/DF140-1.1/2
W208PP5	W208PP5	DC208TT5	5AS08-1.1/8	2/DF240/9
W208PP8	W208PP8	DC208TT8	6AS09-1.1/8D1	PDF240/9
W208PPB11	W208PPB11	DS208TT11	4AS08-7/8	-

ASK FOR NATIONAL QUALITY

Note actual products may differ from photos shown in this brochure.
Product availability and specifications are subject to change without notice.



NATIONAL AGRICULTURAL BEARING INTERCHANGE

NATIONAL	FAFNIR	BCA	NTN	RHP
W208PPB12	W208PPB12	DS208TT12	4AS08-1.1/8	41/PDNF240/9B
W208PPB13	W208PPB13	DS208TT13	1AS08-7/8	2/DNF240/7
W208PPB14	W208PPB14	DS208TT14	-	-
W208PPB16	W208PPB16	HPS104TP	2AH08-1.1/4V2	-
W208PPB2	W208PPB2	-	2AC08-1.1/2	36/PDNF140-1.1/2
W208PPB23	W208PPB23	DS208TT2A	-	-
W208PPB4	W208PPB4	DS208TT4	-	PDF140-1.3/16
W208PPB5	W208PPB5	DS208TT5	1AS08-1.1/8	2/DNF240/9
W208PPB6	W208PPB6	DS208TT6	1AS08-1	2/DNF240/8
W208PPB7	W208PPB7	DS208TT7	1AC08-1.3/16	2/DNF140-1.3/16
W208PPB8	W208PPB8	DS208TT8	2AS08-1.1/8	PDF140-1.3/16
W208PPB9	W208PPB9	DS208TT9	2AS08-1	PDF140-1.3/16
W209PPB2	W209PPB2	DS209TT2	3AC09	PDF145-45
W209PPB4	W209PPB4	DS209TT4	3AC09-1/2	28/PDNF145-1.1/2
W209PPB5	W209PPB5	DS209TT5	2AS09-1.1/4	PDF145-10
W209PPB7	W209PPB7	DS209TT7	-	-
W210PP2	W210PP2	DC210TT2	7AC10-1.15/16	PDF150-1.15/16
W210PP4	W210PP4	DC210TT4	7AS10-1.1/8	PDF150/9
W210PPB2	W210PPB2	DS210TT2	3AC10-1.15/16	PDF150-1.15/16
W210PPB4	W210PPB4	DS210TT4	3AS10-1.3/4	PDF150/9
W210PPB5	W210PPB5	DS210TT5	3AC10-1.3/4	5/PDNF150-1.3/4
W211PP2	W211PP2	DC211TT2	7AC11-2.3/16D1	PDF155-2.3/16
W211PP3	W211PP3	DC211TT3	7AS11-1.1/2	PDF155/12
W211PP5	W211PP5	DS211TT5	6AS11-1.1/2V1	-
W211PPB2	W211PPB2	DS211TT2	3AC11-2.3/16	PDF155-2.3/16
W211PPB3	W211PPB3	DS211TT3	3AS11-1.1/2	PDF155/12
W211PPB6	W211PPB6	DS211TT6	4AS11-1.1/2	-
W214PPB2	W214PPB2	-	-	-
W214PPB9	W214PPB9	-	-	-
Z9504AB	P204RR6	204BBAR	SC0451C3	-

ASK FOR NATIONAL QUALITY

Note actual products may differ from photos shown in this brochure.
Product availability and specifications are subject to change without notice.

NATIONAL PRODUCTS LIMITED WARRANTY

NATIONAL warrants its products against defects in design, material and workmanship for a period of 12-months from the date of sale.

NATIONAL will replace any part of its products, free of charge, if after inspection by NATIONAL the part is deemed a manufacturing defect.

This warranty does not apply to any product which has been subject to unauthorized modification, repair or alteration; an accident; improper operation or maintenance; abnormal conditions; or the wear from normal use.

NATIONAL shall not be liable for loss of time, manufacturing costs, labour, transport, material, loss of profits, consequential damages (direct or indirect), as a result of defective products.

NATIONAL's responsibility is limited to the repair or replacement of the defective product or the reimbursement of the price paid at the time it was ordered.

Any warranty claim must be presented within 30 days of the manufacturing defect discovery. Shipping return charges are at the customer's expense.

ASK FOR NATIONAL QUALITY

Note actual products may differ from photos shown in this brochure.
Product availability and specifications are subject to change without notice.

NATIONAL

OEM Products

National imports world class Bearings and Power Transmission Products. With direct global sourcing and a network of 58 sales offices, National helps manufacturers become more productive and guarantees personalized service.

- Wide product range
- Products from ISO9001 and QS9001 certified manufacturers
- Continuous product development
- Custom fabrication
- Dedicated and professional sales group
- Coast to coast distribution network
- No intermediary; direct purchasing from manufacturers

Applications

- Material Handling • Food Processing • Forestry • Industrial
- Agricultural • Mining • Aggregate

Only one number: 1-866-546-3267

Sales offices:

Atlantic

Bathurst
Charlottetown
Corner Brook
Dartmouth
Moncton
Mt Pearl
Port Hawkesbury
Stellarton
Wabush

Central

Belleville
Concord
Espanola
Guelph
Hearst
Kapuskasing
London
Marathon
Mississauga

North Bay
Ottawa
Sarnia
Sault Ste-Marie
Stoney Creek
Sudbury
Thunder Bay
Timmins
Windsor

Eastern

Chicoutimi
Drummondville
Granby
Lachine
LaSalle
Laval
Longueuil
Montréal Est
Noranda
Québec

Rimouski
Sept-Iles
Sherbrooke
Temiscaming
Thetford Mines
Tracy
Trois-Rivières
Val D'Or
Valleyfield

Western

Calgary
Edmonton
Ft. St. John
Flin Flon
Nisku
Prince George
Regina
Saskatoon
Surrey
Thompson
Winnipeg
Yellowknife



WWW.NTL-BPT.COM